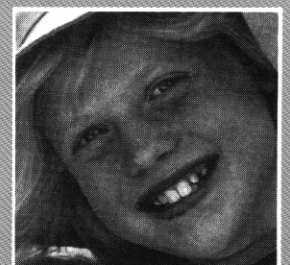
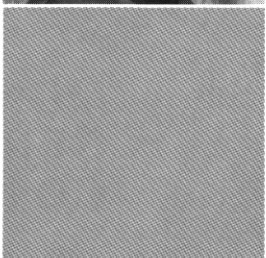
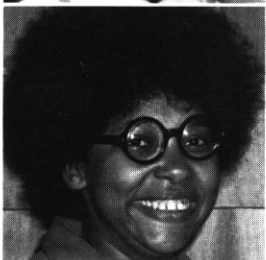


MONTEREY BAY GIRL SCOUT COUNCIL



ANNUAL
REPORT **1983**

FROM THE COUNCIL PRESIDENT

Monterey Bay Girl Scout Council is moving ahead in the '80s with increased membership, innovative programs for camp, more interest in adult development and with increased utilization of its renovated program center.

We have increased our girl membership by 7%, and are vigorously reaching out into all areas and populations of our Council. We are able to extend our program in the Watsonville area with a new part-time worker and enthusiastic volunteers. Our impact on the South Monterey County area is seen in additional troops and leaders, and a stronger neighborhood. We are pleased with the progress in these areas and other areas of our Council, and with the over-all efforts of field staff and volunteers.

Our Council has decided to offer innovative programs at Camp Cawatre which are especially appropriate to this unique facility. We are studying the desires and needs of girls and adults in all outdoor programs.

The training committee is taking another look at adult development and at new ways to bring training and adult education opportunities to more of our volunteers and staff.

We have developed a volunteer affirmative action plan which is being launched this year.

We are happy with our bright, refurbished program center in Salinas. For Girl Scouts, it is a much more usable facility, and for the community, a real asset.

Our funding capabilities have been increased by a grant specified for the troops/groups in Watsonville and by significant grants and gifts for the Salinas program center.

As the Monterey Bay Girl Scout Council steps into 1984 and as we continue to stride into the future, we welcome the challenge to better prepare today's girls for tomorrow's world.



Virginia Leipper
Council President



Development Committee — Salinas Program Center

MONTEREY BAY GIRL SCOUT COUNCIL . . .

- Encompasses Santa Cruz, Monterey and San Benito Counties
- Served . . .
 - 5325 Girl Scouts
 - 1648 adult volunteers
 - 1558 non-registered girls and boys in programs
- Reported 9% of all Monterey Bay girls between the ages of six and seventeen are Girl Scouts
- Saluted the 1648 women and men who give over 100,000 volunteer hours to Monterey Bay Girl Scouting annually
- Provided training and development services to 1244 volunteers in 1983.

VOLUNTEER DEVELOPMENT

Two major items were developed and adopted in 1983 to enhance continuation of volunteer services and development: (1) "Operational Volunteer Policies and Procedures" and (2) a "Volunteer Affirmative Action Plan." Work was completed by volunteer task groups and sub-committees.

Video equipment acquired early in the year provided added flexibility in training services. A volunteer booklet consolidating program event information and the annual training calendar was published for the first time.



Kiddie Kaper Parade

MEMBERSHIP

A gain in girl membership of 7% at the end of the 9-30-83 membership year continued the trend in increased girl members. Minority presence increased to an over-all 25.8% in the three county area. Volunteer membership increased by 11%.

PROGRAM HIGHLIGHTS

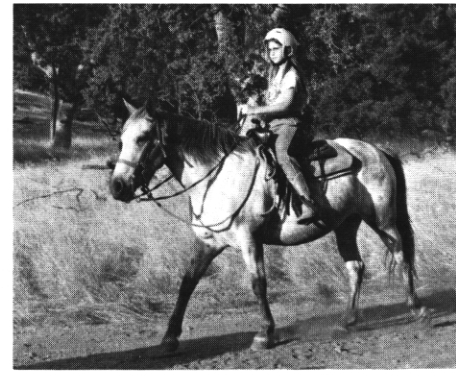
Developing interests, values and relationships are basic emphases in Girl Scouting fostered by activities each year. These activities ranged from traditional Girl Scout activities to those serving specialized needs and interests.

Girl Scouting in addition to weekly troop or group programs provided:

- 1628 girls with troop camp experiences
- 424 girls with day camp experiences
- 321 girls with specialized summer activities from Law Day to gourmet cooking
- 318 girls with resident camp sessions at Camp Cawatre
- 6 girls and two adults with an opportunity to visit the International Girl

Scout and Girl Guide Center at Cuernavaca, Mexico and to assist with a day camp for local children

- 2 girls with a legislative study session in Sacramento
- 2 girls with outdoor program event opportunities at the National Girl Scout Program Center in Wyoming
- 1 girl with an art workshop in Massachusetts
- 1 girl with an opportunity to participate in an international event in the Pacific Trust Territory involving day camp work with children
- Classes and other programs throughout the year for girls ranging from first aid to clogging, self-defense to Holiday carnivals for neighborhood families and friends.



Horseback riding at Camp Cawatre

In Watsonville two new services were initiated in 1983:

- A teen summer jobs program co-sponsored by the YWCA. Twenty-seven girls and boys learned how to identify and make career choices, interview and apply for employment, and talked with a panel of local employers to review the employment situation in Santa Cruz County.
- A six-week summer program held in collaboration with the Pajaro Valley Unified School District and the California State Department of Education Mini-corps program. The program activities were provided in conjunction with and following a summer school session for children of migrant families. Mini-corps workers were trained with Girl Scout program basics and coached by a council field director in program delivery to 800 students in the six-week program.

New programs introduced in 1983 developed by volunteers in the local council included:

- The World Peace Program with segments designed for each age level to develop understanding of different cultures, global issues and elements fostering interdependence.
- Your Heart Is In Your Hands Program designed to enhance girls' understanding and choice in developing good nutritional habits. Materials and support were given from the Stanford Heart Disease Prevention Program and the American Heart Association.

Financial assistance was provided through camperships, grants and scholarships. Over \$10,000 was provided to more than 160 girls and adults for camping, program events, learning opportunities, and membership development.



Introduction of computer at Salinas Program Center

ORGANIZATIONAL DEVELOPMENT

Board and committee members and delegates in 1983 participated in activities essential to the management of the Council. Delegates evaluated and made recommendations for annual operating objectives; received and approved changes in the By-laws; endorsed a review of programs operated at the resident camp facility; and actively participated in legislative communications on issues impacting Girl Scouting at the state level.

The Board of Directors revised Policies and Procedures for Employed Personnel and worked towards completion of the feasibility study for acquisition of data processing equipment in the Council office.

SALINAS PROGRAM CENTER

Completion of the renovation of the Salinas Program Center, the only facility owned by the Council, was celebrated with three days of opening activities in August. Council members, girls, community friends and neighborhood residents visited the center. Troop meetings, volunteer events, classes and girl overnights booked the center during the fall months. Furnishings and equipment given by individuals, troops, foundations, and organizations provided a new look to on-going programs as well as new program opportunities ranging from computer badge programs to nutrition and food preparation programs.

COMMUNITY SERVICE

Contributing time and planning to meet community needs is another emphasis in Girl Scout program activities.

Over 3700 girls participated in delivering service to communities in which they lived. Many girls participated in more than one service, or in services given in an on-going basis.

Frequent and favorite activities involved services with senior citizens and included crafts or singing as well as programs adopting a grandparent.

Other Girl Scout efforts included conservation or beautification efforts that ranged from tree or ground cover planting in the Big Basin Redwoods at San Lorenzo Park in King City, to beach clean-up programs or clearing mud from storm damaged areas.

Services provided at County Fairs, pancake breakfasts, Special Olympics and within their own neighborhoods found Girl Scouts everywhere in 1983.



Planting ground cover — San Lorenzo County Park

MONTEREY BAY GIRL SCOUT COUNCIL IS PROUD TO ANNOUNCE AND THANK DONORS TO THE 1983 GIRL SCOUT PROGRAM INCLUDING:

GOLDEN TREFOIL

Durrell Agha
 Roger & Janice Anderman
 Melanie Bassett
 Nancy & Irving Bowker
 Mr. & Mrs. Elmer Canady
 Steven Chambers
 Davey Fantauzzo
 Thomas Gorman, D.D.S.
 Margaret Gould
 Mr. & Mrs. George Hammond
 Joanna L. Johnson
 Leslie Johnson-Kelsay
 Dale & Virginia Leipper
 Karen Limes
 Dorothea McGrath
 Leona Manildi
 Mr. & Mrs. Basil Mills
 Mr. & Mrs. David Mills
 Gene Moore
 Gloria Moore
 Gaylord & Virginia Nelson
 Zoe Ann Orr
 Mr. & Mrs. George Ponton
 Mr. & Mrs. Norman Remer
 Eleanor Robinson
 Marsha Sawyer
 Betty Savage
 Brenda L. Whitsett

FOUNDATIONS

Jacob Abramson Foundation
 Bing Crosby Youth Fund
 Dunspaugh-Dalton Foundation
 Grover Herrman Foundation
 James Irvine Foundation
 Catherine L. & Robert O. McMahon
 Foundation

Monterey Peninsula Foundation
 Security Pacific Foundation
 Upjohn California Fund

COMMUNITY GROUPS

California International Airshow
 Carmel Host Lions
 Elks Club, Salinas
 Entre Nous Society
 Exchange Club, Watsonville
 Exchange Club, Hollister
 Greenfield Lions Club
 King City Rotary
 Kiwanis Club of Monterey
 Monterey Peninsula Volunteer
 Services
 North Monterey County Mothers
 Club
 Prunedale Lions Club

Rotary Club of Mid Santa Cruz
 County
 Salinas Host Lions Club
 Salinas Rotary Club
 Salinas Valley Guild, Inc.
 Soledad Community Chest
 Soroptimists International of
 Salinas
 Women in Architecture, Monterey
 County Chapter
 Zonta International of Salinas

IN-KIND CONTRIBUTIONS

BankAmerica Foundation
 Floors and Moore
 Georgia Pacific
 Gerald W. Harner
 Jaycees of Salinas
 Paul Mrozinski, AIA
 Pacific Telephone
 Nob Hill Foods
 Taylor California Winery
 Y's Men's Club, Monterey

BEQUESTS

John Sinclair Family Fund

CORPORATE AND BUSINESS

Basic Vegetable Products
 California Orchard Company —
 Salinas Land Company
 Cambridge Plan International
 Casey Newspapers
 Bruce Church, Inc.
 Digital Research, Inc.
 Ford's Department Store
 Jim Gattis Men's Wear
 Joseph Fratessa Associates
 York Gin Investment Corporation
 Granite Construction Company
 Hayward Lumber
 Halex Corporation
 McCormick and Company, Inc.
 Merrill Farms
 Mervyn's Department Stores
 Salinas Valley Ford
 Teledyne-McCormick Selph

UNITED WAY ORGANIZATIONS

United Way of the Monterey
 Peninsula
 United Way of the Salinas Area
 United Way of Santa Cruz County

FINANCIAL REPORT

December 31, 1983*

1983 Financial Report — Operational Budget

INCOME SOURCES		EXPENSE ACTIVITIES	
Gifts and Contributions	\$ 34,846	Organization and Program Services to Troops/Groups	\$199,718
Camp/Program Fees	52,421	Volunteer Training and Development	32,682
United Way	77,566	Resident Camp	65,362
Cookie Sales	173,359	Fund Raising	30,865
Interest	19,761	Management	34,496
Miscellaneous	5,170		
TOTAL	\$363,123	TOTAL	\$363,123

Building Fund Salinas Program Center

Income from Individuals, Foundations, Organizations, Interest, 1982-83	\$141,845	Renovation and Equipment Costs To Date	\$175,404
Unrestricted Funds	30,312		
Gifts-in-Kind valued at	3,888		

*Audit available May,
1984 for review in Council Office.