

ILLUSTRATIONS

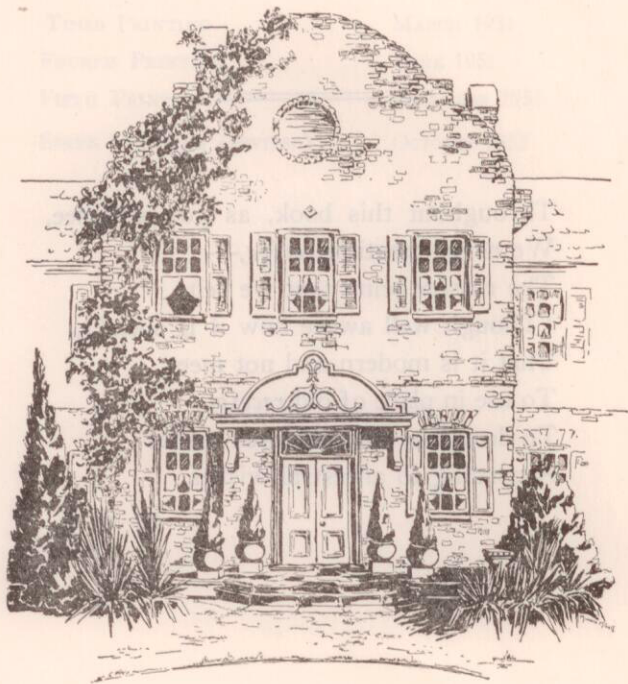
Cover—Elizabeth O'Neill Verner

Helen Devereux O'Neill

Frontispiece—Minnie Robertson Mikell

	Page
<i>Miles Brewton House</i> —Mark Young	6
<i>St. Philip's Church</i> —Elizabeth O'Neill Verner	32
<i>Old Saint Andrews Church</i> —Alfred Hutty	80
<i>Harvesting Rice</i> —Anna Heyward Taylor	124
<i>Snow's Island in the Pee Dee</i> —Alice Huger Smith	157
<i>American Red Cross Headquarters</i> —Mary Agnes Lansdowne	185
<i>Sword Gates</i> —Julia Homer Wilson	220
<i>St. Michael's Church</i> —Elizabeth O'Neill Verner	244
<i>Gullah Lines</i> —Mary Deas Ravenel Louise Frierson Kerr	
<i>Chapter Verses</i> —Louise Frierson Kerr	

References concerning the literary works of our contributors were composed by the Cook Book Committee.

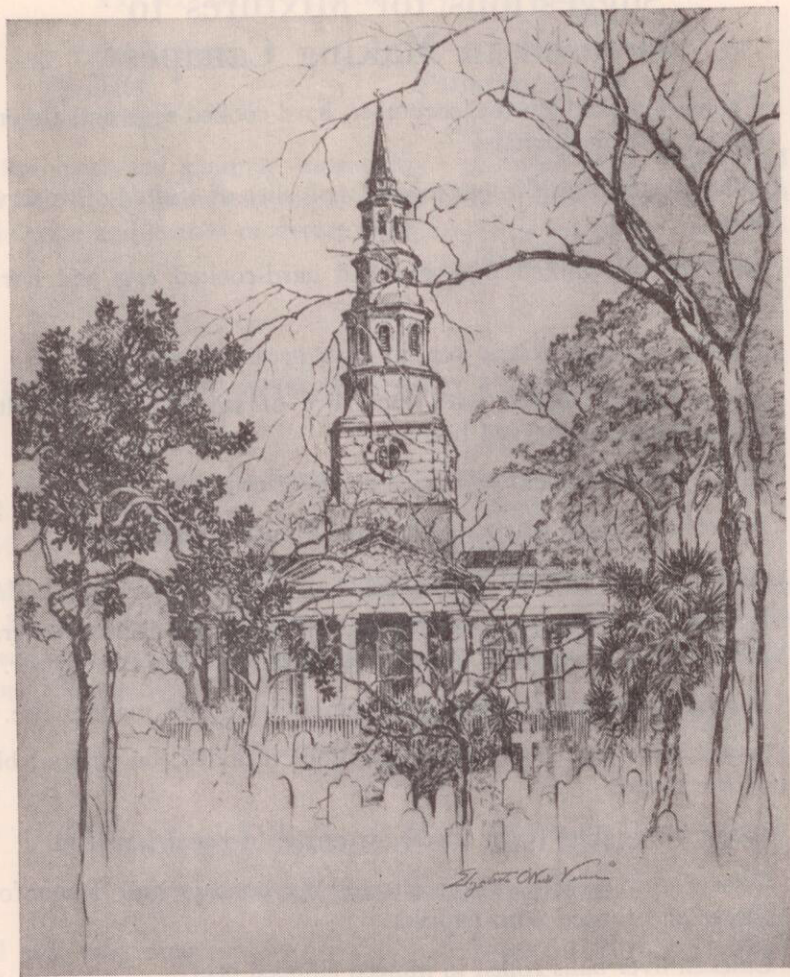


Minnie Robertson Mikell

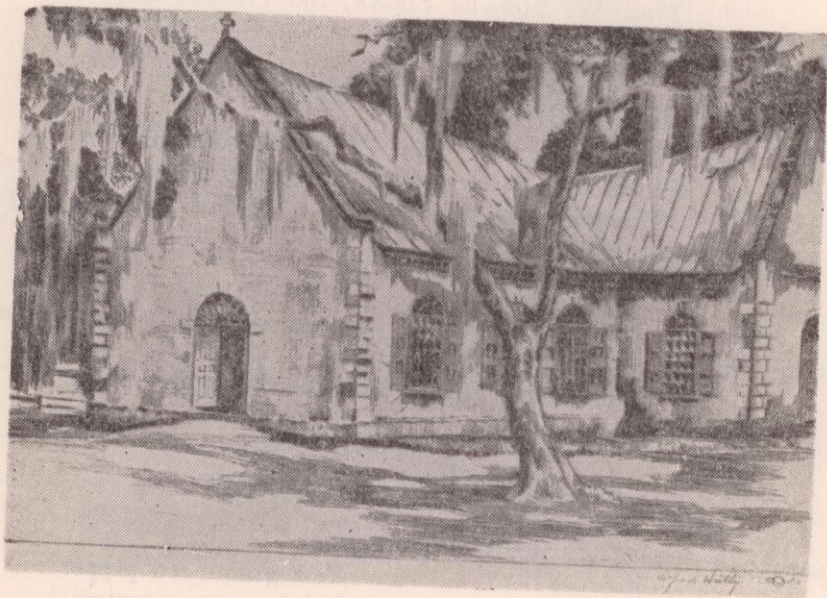
MIDDLETON PLACE 1741



MILES BREWTON HOUSE 1765



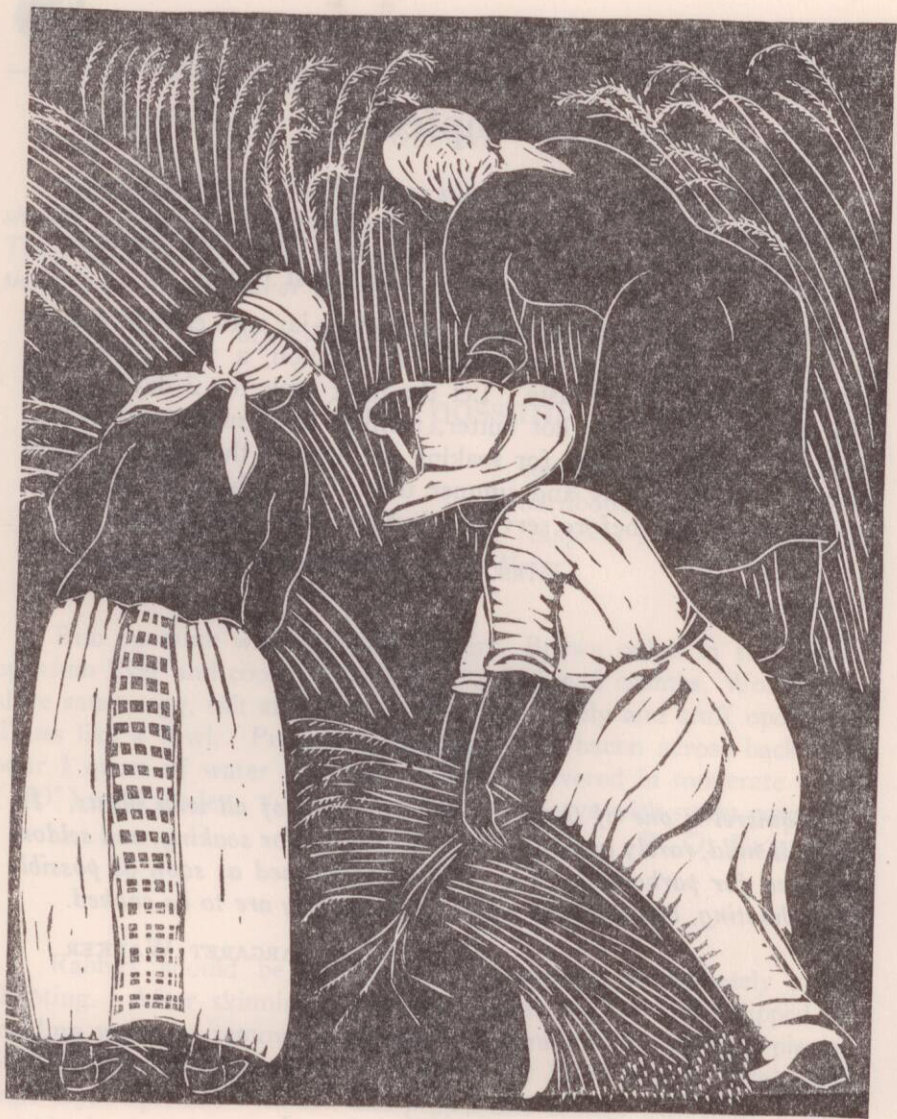
St. Philip's Church 1835



Alfred Hutton

OLD SAINT ANDREWS CHURCH

1706



—Anna Heyward Taylor

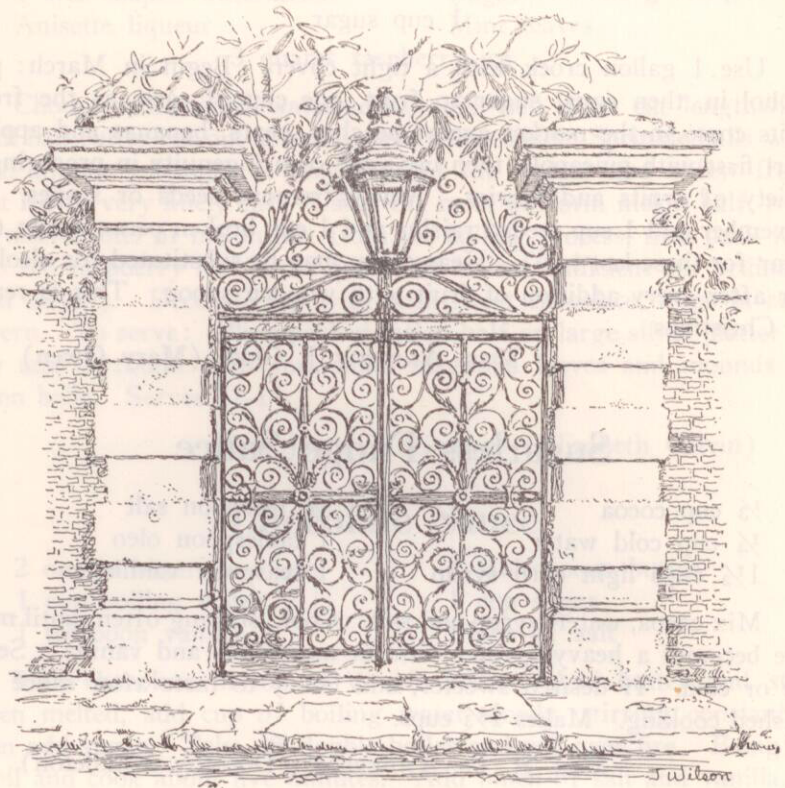
HARVESTING RICE



SNOW'S ISLAND IN THE PEE DEE—Courtesy Pink House Galleries
—*Alice R. Huger Smith*



HOME OF THE AMERICAN RED CROSS
CHARLESTON, SOUTH CAROLINA



SWORD GATES 1849



—*Elisabeth O'Neill Verner*

ST. MICHAEL'S CHURCH 1752