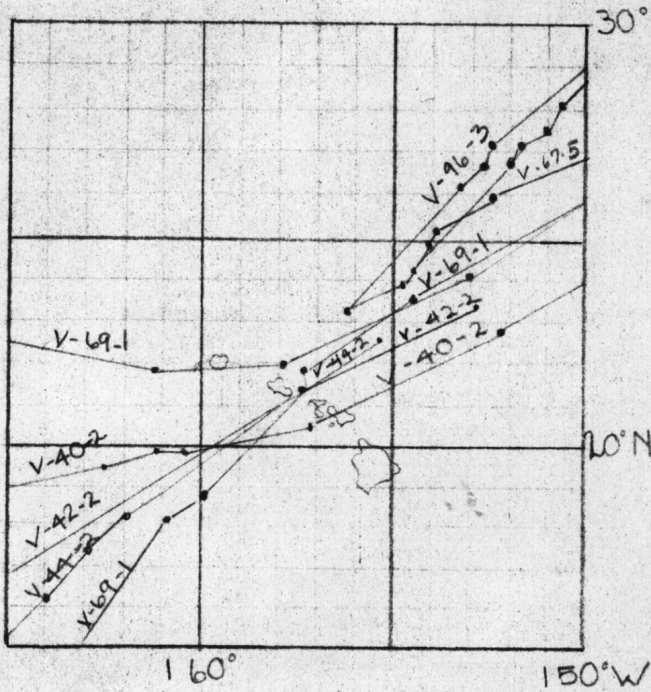
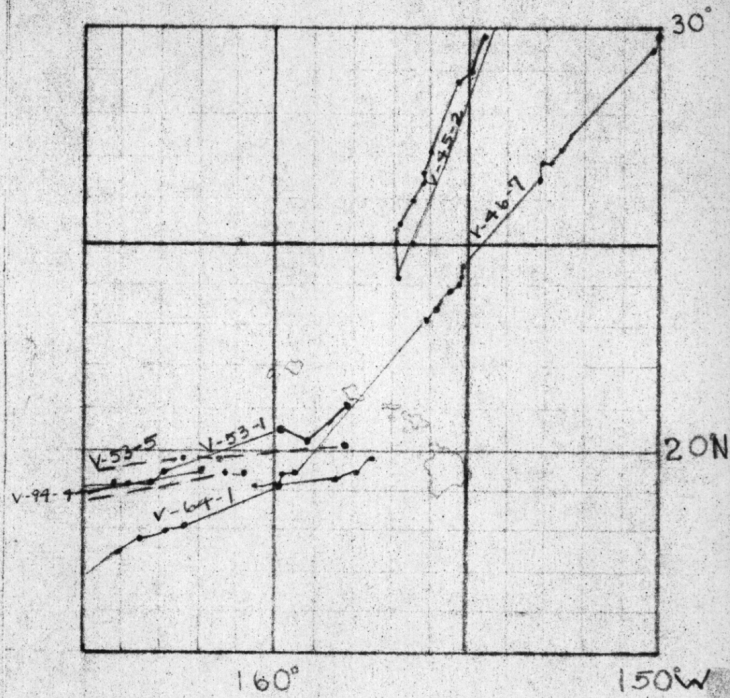


SOME AVAILABLE SECTIONS OF BATHYTHERMOGRAPH OBSERVATIONS

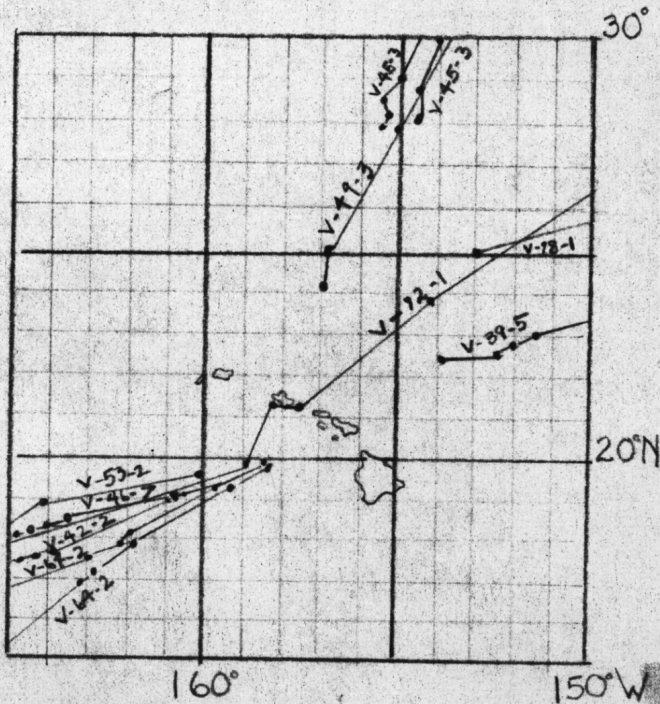
JANUARY



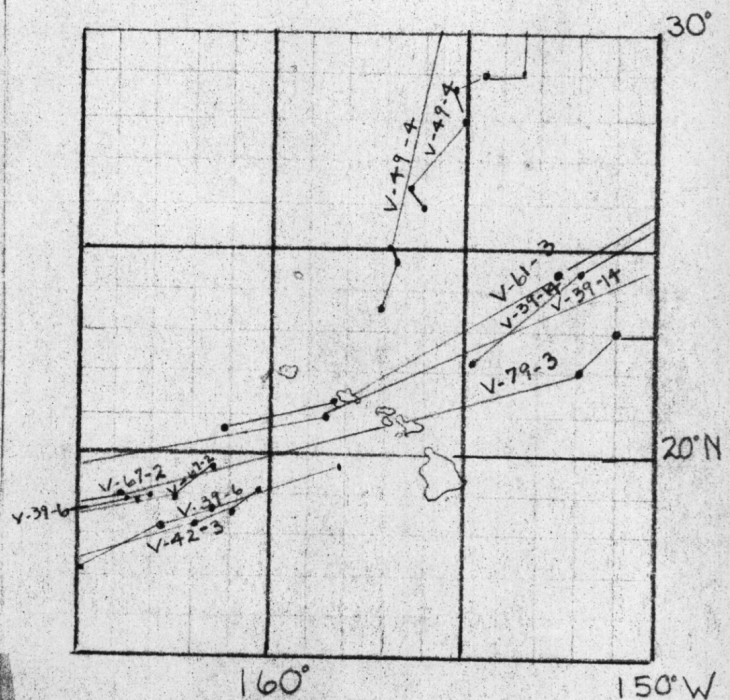
FEBRUARY



MARCH

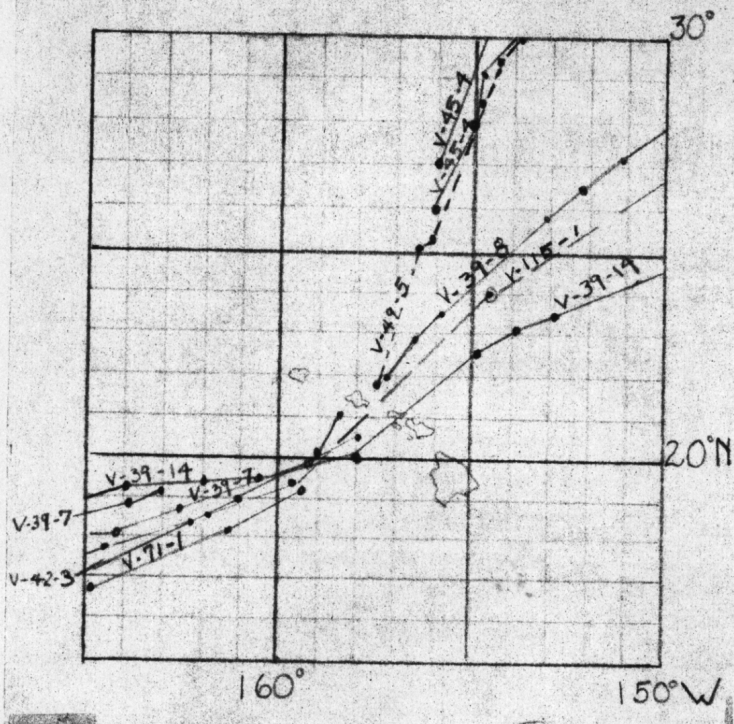


APRIL

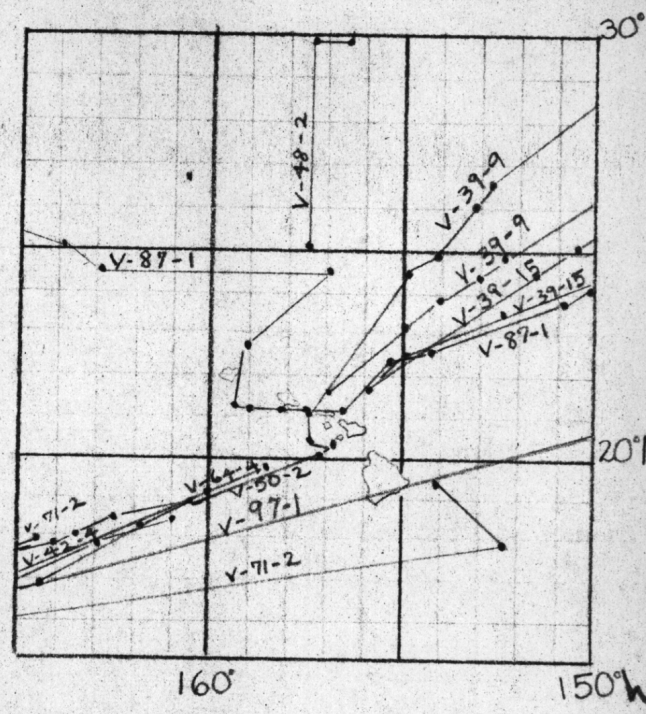


SOME AVAILABLE SECTIONS OF BATHYTHERMOGRAPH OBSERVATIONS

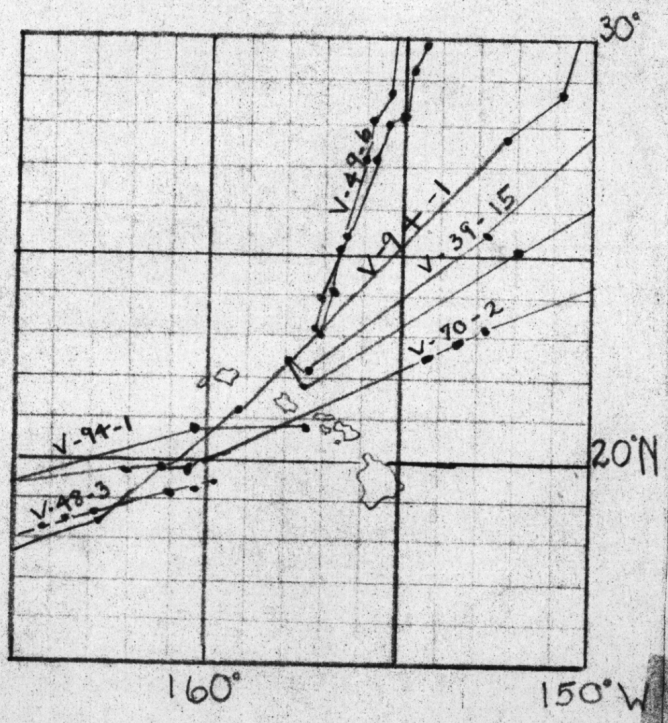
MAY



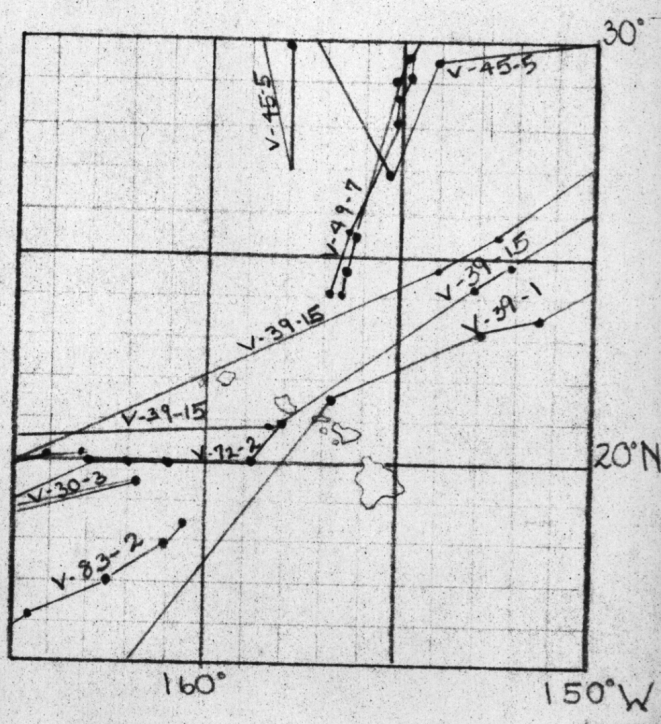
JUNE



JULY

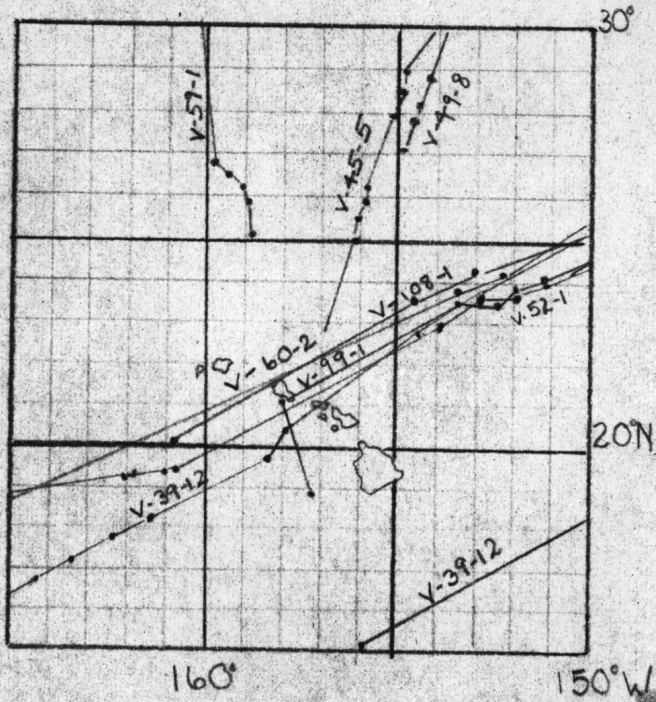


AUGUST

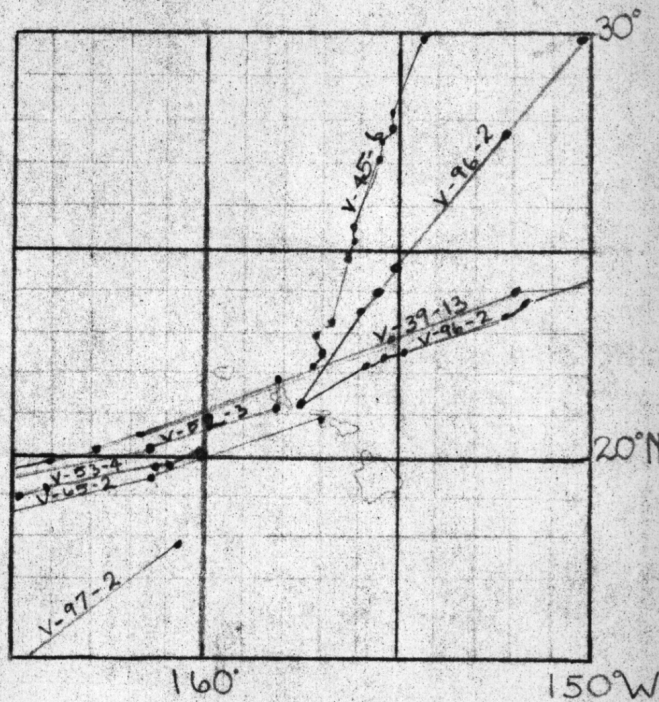


SOME AVAILABLE SECTIONS OF BATHYTHERMOGRAPH OBSERVATIONS

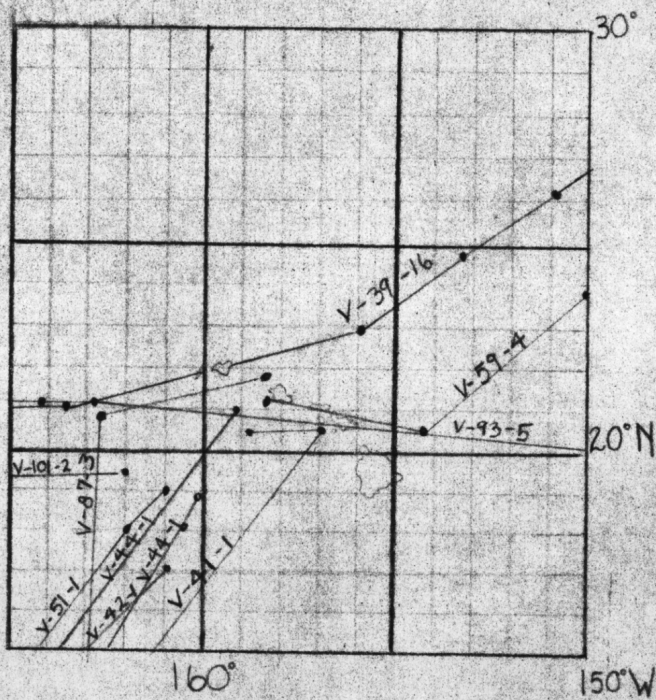
SEPTEMBER



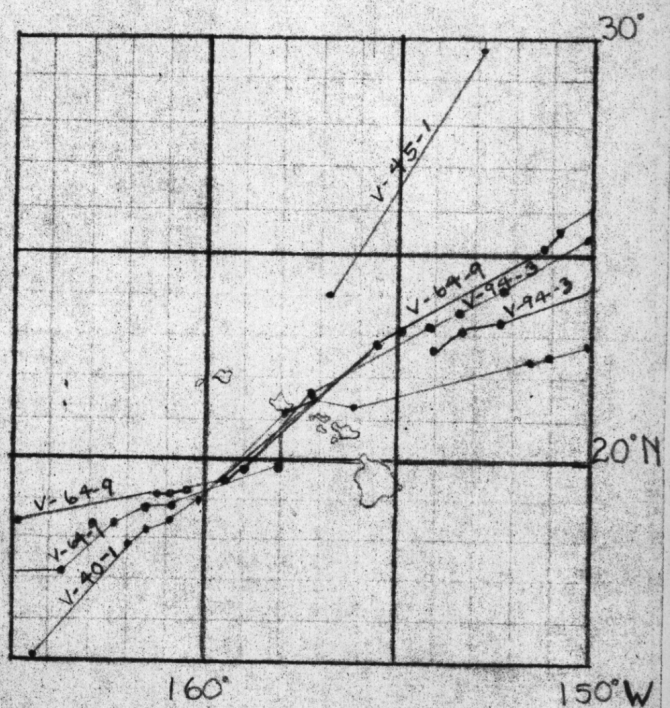
OCTOBER

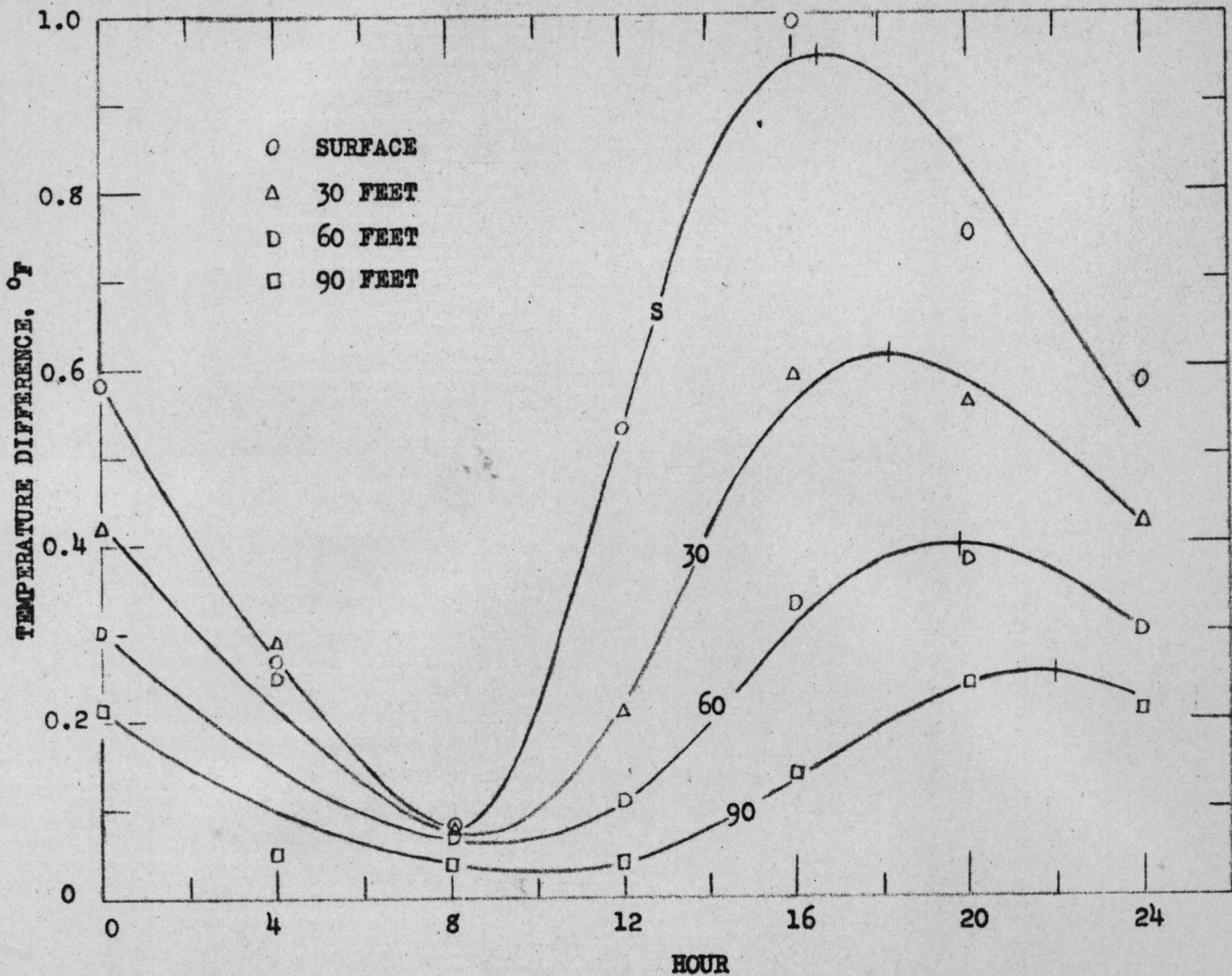


NOVEMBER

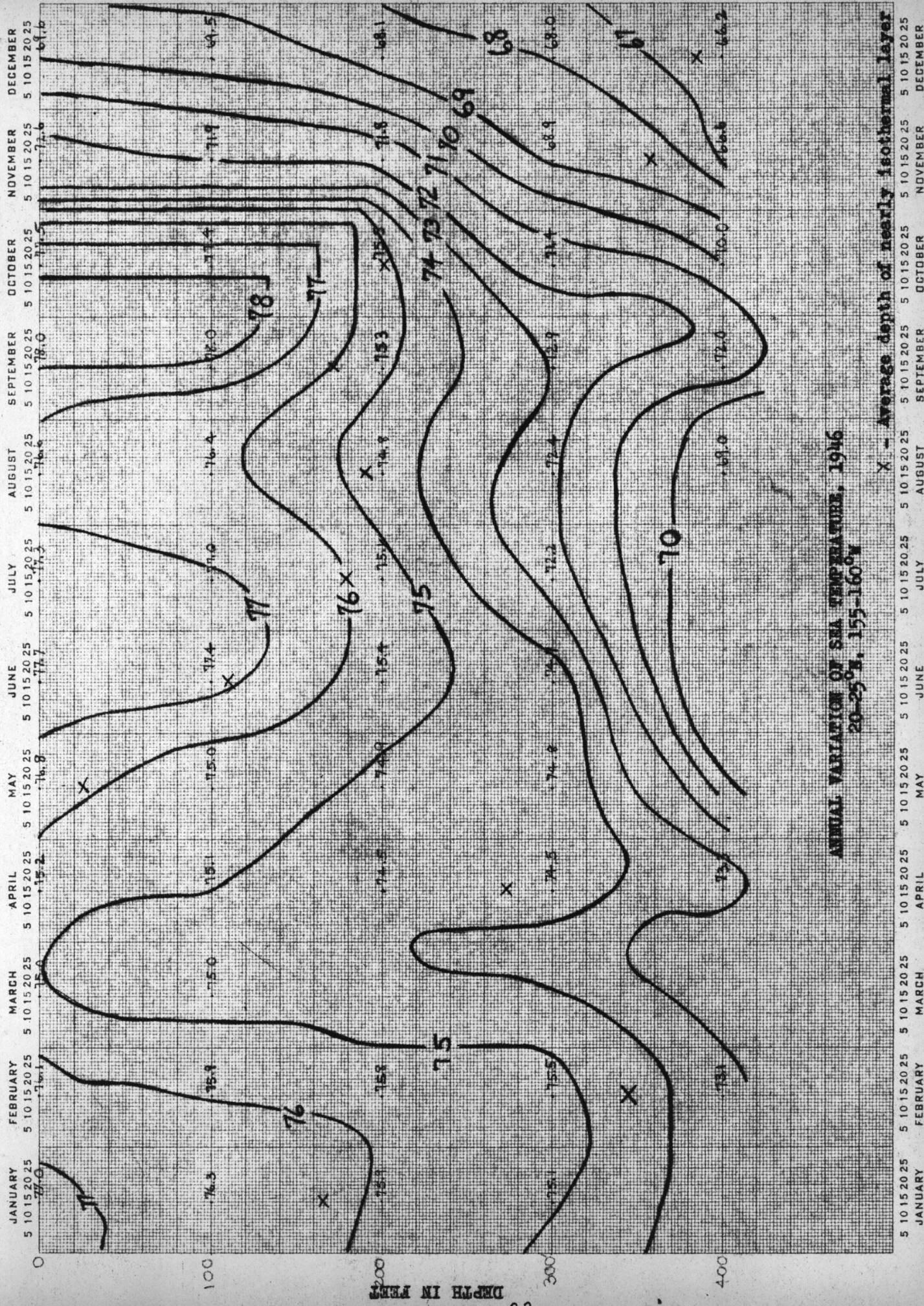


DECEMBER





Diurnal variation of temperature in the vicinity of the Hawaiian Islands in August represented by means of the deviations of the temperatures at depths of 0, 30, 60 and 90 feet from the temperature at 120 feet.

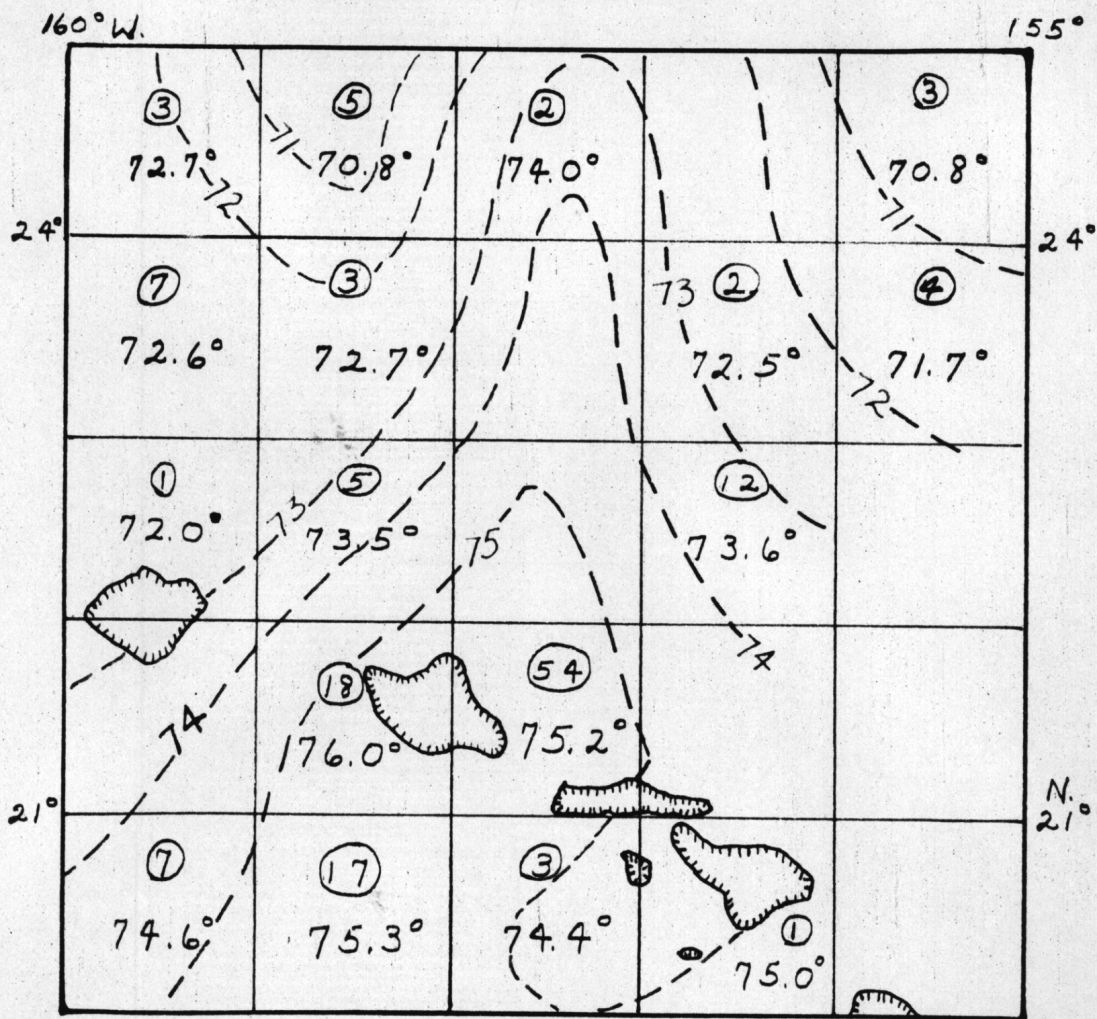


ANNUAL VARIATION OF SEA TEMPERATURE, 1946
 20-25°N, 155-160°W

X - Average depth of nearly isothermal layer

AVERAGE SEA SURFACE TEMPERATURES °F

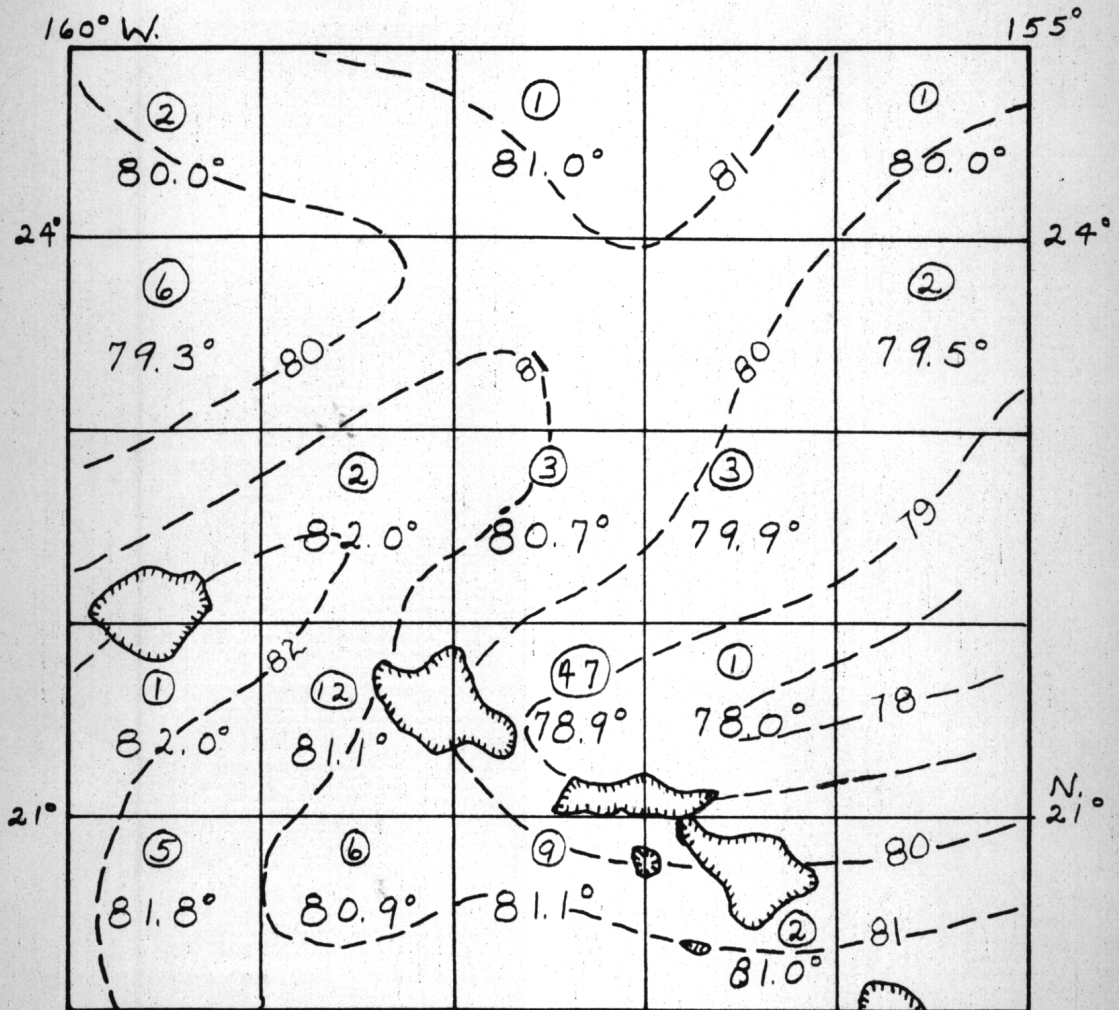
MARCH



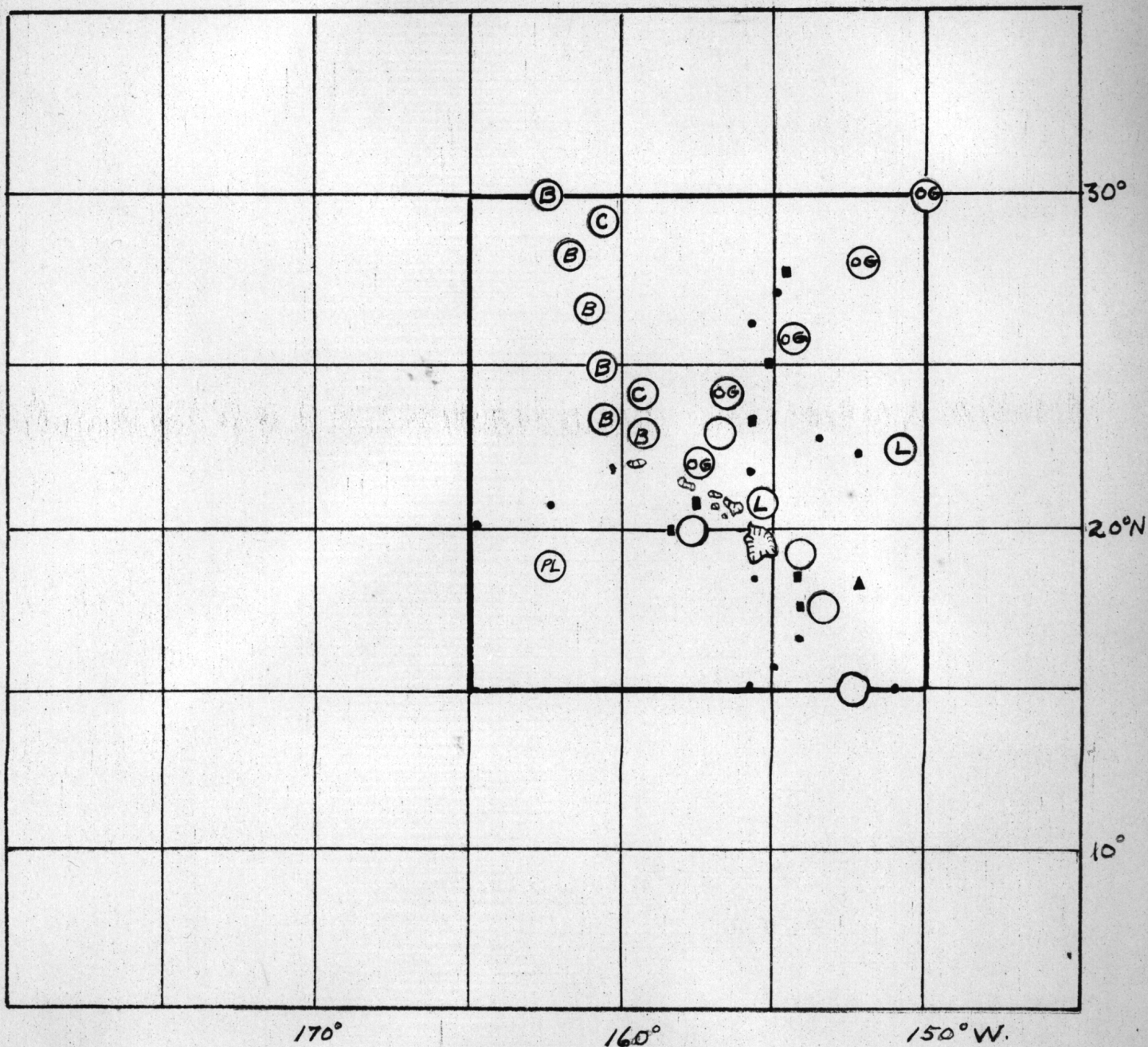
Encircled number is number of observations

AVERAGE SEA SURFACE TEMPERATURES °F

SEPTEMBER



Encircled number is number of observations



SERIAL SECTIONS OF TEMPERATURE AND SALINITY
HAWAIIAN ISLANDS

Legend on page 26

Legend for Serial Sections

- Serial sections of temperature and salinity.
- Serial sections of temperature only.

Stations without abbreviations are after A. Defant up to February 1, 1926.

Stations with abbreviations are subsequent to that date. Abbreviations have the following meaning:

B - Bushnell
C - Carnegie
OG - Oglala
L - Louisville
PL - Pioneer

The Hawaiian section is from general chart of Pacific Ocean after A. Defant, see "International Aspects of Oceanography", Thomas Vaughan and Others, National Academy of Sciences, Washington D.C. 1937 plate 12.

- Serial sections of temperature from the Carnegie.
- ▲ Serial sections of temperature from the Egeria.

Sources of temperature data for the Hawaiian section are also from Vaughan, pages 23, 24, 26.

Series of Typical Bathythermograms
from Northeast of Honolulu
January 1944 to December 1944

Series of Typical Bathythermograms
from Southwest of Honolulu
January 1944 to December 1944

Bathythermograms Illustrating Other Hawaiian
Areas and Other Years