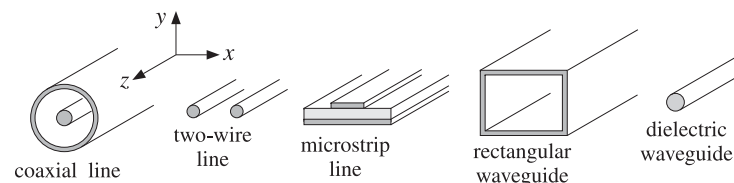


## Waveguides

Waveguides are used to transfer electromagnetic power efficiently from one point in space to another. Some common guiding structures are shown in the figure below. These include the typical coaxial cable, the two-wire and microstrip transmission lines, hollow conducting waveguides, and optical fibers.

In practice, the choice of structure is dictated by: (a) the desired operating frequency band, (b) the amount of power to be transferred, and (c) the amount of transmission losses that can be tolerated.



**Fig. 9.0.1** Typical waveguiding structures.

Coaxial cables are widely used to connect RF components. Their operation is practical for frequencies below 3 GHz. Above that the losses are too excessive. For example, the attenuation might be 3 dB per 100 m at 100 MHz, but 10 dB/100 m at 1 GHz, and 50 dB/100 m at 10 GHz. Their power rating is typically of the order of one kilowatt at 100 MHz, but only 200 W at 2 GHz, being limited primarily because of the heating of the coaxial conductors and of the dielectric between the conductors (dielectric voltage breakdown is usually a secondary factor.) However, special short-length coaxial cables do exist that operate in the 40 GHz range.

Another issue is the single-mode operation of the line. At higher frequencies, in order to prevent higher modes from being launched, the diameters of the coaxial conductors must be reduced, diminishing the amount of power that can be transmitted.

Two-wire lines are not used at microwave frequencies because they are not shielded and can radiate. One typical use is for connecting indoor antennas to TV sets. Microstrip lines are used widely in microwave integrated circuits.

Rectangular waveguides are used routinely to transfer large amounts of microwave power at frequencies greater than 3 GHz. For example at 5 GHz, the transmitted power might be one megawatt and the attenuation only 4 dB/100 m.

Optical fibers operate at optical and infrared frequencies, allowing a very wide bandwidth. Their losses are very low, typically, 0.2 dB/km. The transmitted power is of the order of milliwatts.

### 9.1 Longitudinal-Transverse Decompositions

In a waveguiding system, we are looking for solutions of Maxwell's equations that are propagating along the guiding direction (the  $z$  direction) and are confined in the near vicinity of the guiding structure. Thus, the electric and magnetic fields are assumed to have the form:

$$\begin{aligned} E(x, y, z, t) &= E(x, y) e^{j\omega t - j\beta z} \\ H(x, y, z, t) &= H(x, y) e^{j\omega t - j\beta z} \end{aligned} \quad (9.1.1)$$

where  $\beta$  is the propagation wavenumber along the guide direction. The corresponding wavelength, called the *guide wavelength*, is denoted by  $\lambda_g = 2\pi/\beta$ .

The precise relationship between  $\omega$  and  $\beta$  depends on the type of waveguiding structure and the particular propagating mode. Because the fields are confined in the transverse directions (the  $x, y$  directions,) they cannot be uniform (except in very simple structures) and will have a non-trivial dependence on the transverse coordinates  $x$  and  $y$ . Next, we derive the equations for the phasor amplitudes  $E(x, y)$  and  $H(x, y)$ .

Because of the preferential role played by the guiding direction  $z$ , it proves convenient to decompose Maxwell's equations into components that are *longitudinal*, that is, along the  $z$ -direction, and components that are *transverse*, along the  $x, y$  directions. Thus, we decompose:

$$E(x, y) = \underbrace{\hat{x} E_x(x, y) + \hat{y} E_y(x, y)}_{\text{transverse}} + \underbrace{\hat{z} E_z(x, y)}_{\text{longitudinal}} \equiv E_T(x, y) + \hat{z} E_z(x, y) \quad (9.1.2)$$

In a similar fashion we may decompose the gradient operator:

$$\nabla = \underbrace{\hat{x} \partial_x + \hat{y} \partial_y}_{\text{transverse}} + \hat{z} \partial_z = \nabla_T + \hat{z} \partial_z = \nabla_T - j\beta \hat{z} \quad (9.1.3)$$

where we made the replacement  $\partial_z \rightarrow -j\beta$  because of the assumed  $z$ -dependence. Introducing these decompositions into the source-free Maxwell's equations we have:

$$\begin{aligned} \nabla \times E &= -j\omega\mu H & (\nabla_T - j\beta\hat{z}) \times (E_T + \hat{z} E_z) &= -j\omega\mu (H_T + \hat{z} H_z) \\ \nabla \times H &= j\omega\epsilon E & (\nabla_T - j\beta\hat{z}) \times (H_T + \hat{z} H_z) &= j\omega\epsilon (E_T + \hat{z} E_z) \\ \nabla \cdot E &= 0 & (\nabla_T - j\beta\hat{z}) \cdot (E_T + \hat{z} E_z) &= 0 \\ \nabla \cdot H &= 0 & (\nabla_T - j\beta\hat{z}) \cdot (H_T + \hat{z} H_z) &= 0 \end{aligned} \quad (9.1.4)$$

#### 9.1. Longitudinal-Transverse Decompositions

where  $\epsilon, \mu$  denote the permittivities of the medium in which the fields propagate, for example, the medium between the coaxial conductors in a coaxial cable, or the medium within the hollow rectangular waveguide. This medium is assumed to be lossless for now.

We note that  $\hat{z} \cdot \hat{z} = 1$ ,  $\hat{z} \times \hat{z} = 0$ ,  $\hat{z} \cdot E_T = 0$ ,  $\hat{z} \cdot \nabla_T E_z = 0$  and that  $\hat{z} \times E_T$  and  $\hat{z} \times \nabla_T E_z$  are transverse while  $\nabla_T \times E_T$  is longitudinal. Indeed, we have:

$$\begin{aligned} \hat{z} \times E_T &= \hat{z} \times (\hat{x} E_x + \hat{y} E_y) = \hat{y} E_x - \hat{x} E_y \\ \nabla_T \times E_T &= (\hat{x} \partial_x + \hat{y} \partial_y) \times (\hat{x} E_x + \hat{y} E_y) = \hat{z} (\partial_x E_y - \partial_y E_x) \end{aligned}$$

Using these properties and equating longitudinal and transverse parts in the two sides of Eq. (9.1.4), we obtain the equivalent set of Maxwell equations:

$$\begin{aligned} \nabla_T E_z \times \hat{z} - j\beta \hat{z} \times E_T &= -j\omega\mu H_T \\ \nabla_T H_z \times \hat{z} - j\beta \hat{z} \times H_T &= j\omega\epsilon E_T \\ \nabla_T \times E_T + j\omega\mu \hat{z} H_z &= 0 \\ \nabla_T \times H_T - j\omega\epsilon \hat{z} E_z &= 0 \\ \nabla_T \cdot E_T - j\beta E_z &= 0 \\ \nabla_T \cdot H_T - j\beta H_z &= 0 \end{aligned} \quad (9.1.5)$$

Depending on whether both, one, or none of the longitudinal components are zero, we may classify the solutions as transverse electric and magnetic (TEM), transverse electric (TE), transverse magnetic (TM), or hybrid:

$E_z = 0, H_z = 0,$	TEM modes
$E_z = 0, H_z \neq 0,$	TE or H modes
$E_z \neq 0, H_z = 0,$	TM or E modes
$E_z \neq 0, H_z \neq 0,$	hybrid or HE or EH modes

In the case of TEM modes, which are the dominant modes in two-conductor transmission lines such as the coaxial cable, the fields are purely transverse and the solution of Eq. (9.1.5) reduces to an equivalent two-dimensional electrostatic problem. We will discuss this case later on.

In all other cases, at least one of the longitudinal fields  $E_z, H_z$  is non-zero. It is then possible to express the transverse field components  $E_T, H_T$  in terms of the longitudinal ones,  $E_z, H_z$ .

Forming the cross-product of the second of equations (9.1.5) with  $\hat{z}$  and using the BAC-CAB vector identity,  $\hat{z} \times (\hat{z} \times H_T) = \hat{z}(\hat{z} \cdot H_T) - H_T(\hat{z} \cdot \hat{z}) = -H_T$ , and similarly,  $\hat{z} \times (\nabla_T H_z \times \hat{z}) = \nabla_T H_z$ , we obtain:

$$\nabla_T H_z + j\beta H_T = j\omega\epsilon \hat{z} \times E_T$$

Thus, the first two of (9.1.5) may be thought of as a linear system of two equations in the two unknowns  $\hat{z} \times E_T$  and  $H_T$ , that is,

$$\begin{aligned} \beta \hat{z} \times E_T - \omega\mu H_T &= j\hat{z} \times \nabla_T E_z \\ \omega\epsilon \hat{z} \times E_T - \beta H_T &= -j\nabla_T H_z \end{aligned} \quad (9.1.6)$$

The solution of this system is:

$$\begin{aligned}\hat{\mathbf{z}} \times \mathbf{E}_T &= -\frac{j\beta}{k_c^2} \hat{\mathbf{z}} \times \nabla_T E_z - \frac{j\omega\mu}{k_c^2} \nabla_T H_z \\ \mathbf{H}_T &= -\frac{j\omega\epsilon}{k_c^2} \hat{\mathbf{z}} \times \nabla_T E_z - \frac{j\beta}{k_c^2} \nabla_T H_z\end{aligned}\quad (9.1.7)$$

where we defined the so-called *cutoff wavenumber*  $k_c$  by:

$$k_c^2 = \omega^2 \epsilon \mu - \beta^2 = \frac{\omega^2}{c^2} - \beta^2 = k^2 - \beta^2 \quad (\text{cutoff wavenumber}) \quad (9.1.8)$$

The quantity  $k = \omega/c = \omega\sqrt{\epsilon\mu}$  is the wavenumber a uniform plane wave would have in the propagation medium  $\epsilon, \mu$ .

Although  $k_c^2$  stands for the difference  $\omega^2 \epsilon \mu - \beta^2$ , it turns out that the boundary conditions for each waveguide type force  $k_c^2$  to take on certain values, which can be positive, negative, or zero, and characterize the propagating modes. For example, in a dielectric waveguide  $k_c^2$  is positive inside the guide and negative outside it; in a hollow conducting waveguide  $k_c^2$  takes on certain quantized positive values; in a TEM line,  $k_c^2$  is zero. Some related definitions are the *cutoff frequency* and the *cutoff wavelength* defined as follows:

$$\omega_c = ck_c, \quad \lambda_c = \frac{2\pi}{k_c} \quad (\text{cutoff frequency and wavelength}) \quad (9.1.9)$$

We can then express  $\beta$  in terms of  $\omega$  and  $\omega_c$ , or  $\omega$  in terms of  $\beta$  and  $\omega_c$ . Taking the positive square roots of Eq. (9.1.8), we have:

$$\beta = \frac{1}{c} \sqrt{\omega^2 - \omega_c^2} = \frac{\omega}{c} \sqrt{1 - \frac{\omega_c^2}{\omega^2}} \quad \text{and} \quad \omega = \sqrt{\omega_c^2 + \beta^2 c^2} \quad (9.1.10)$$

Often, Eq. (9.1.10) is expressed in terms of the wavelengths  $\lambda = 2\pi/k = 2\pi c/\omega$ ,  $\lambda_c = 2\pi/k_c$ , and  $\lambda_g = 2\pi/\beta$ . It follows from  $k^2 = k_c^2 + \beta^2$  that

$$\frac{1}{\lambda^2} = \frac{1}{\lambda_c^2} + \frac{1}{\lambda_g^2} \quad \Rightarrow \quad \lambda_g = \frac{\lambda}{\sqrt{1 - \frac{\lambda^2}{\lambda_c^2}}} \quad (9.1.11)$$

Note that  $\lambda$  is related to the free-space wavelength  $\lambda_0 = 2\pi c_0/\omega = c_0/f$  by the refractive index of the dielectric material  $\lambda = \lambda_0/n$ .

It is convenient at this point to introduce the *transverse impedances* for the TE and TM modes by the definitions:

$$\eta_{TE} = \frac{\omega\mu}{\beta} = \eta \frac{\omega}{\beta c}, \quad \eta_{TM} = \frac{\beta}{\omega\epsilon} = \eta \frac{\beta c}{\omega} \quad (\text{TE and TM impedances}) \quad (9.1.12)$$

where the medium impedance is  $\eta = \sqrt{\mu/\epsilon}$ , so that  $\eta/c = \mu$  and  $\eta c = 1/\epsilon$ . We note the properties:

$$\eta_{TE} \eta_{TM} = \eta^2, \quad \frac{\eta_{TE}}{\eta_{TM}} = \frac{\omega^2}{\beta^2 c^2} \quad (9.1.13)$$

Because  $\beta c/\omega = \sqrt{1 - \omega_c^2/\omega^2}$ , we can write also:

$$\eta_{TE} = \frac{\eta}{\sqrt{1 - \frac{\omega_c^2}{\omega^2}}}, \quad \eta_{TM} = \eta \sqrt{1 - \frac{\omega_c^2}{\omega^2}} \quad (9.1.14)$$

With these definitions, we may rewrite Eq. (9.1.7) as follows:

$$\begin{aligned}\hat{\mathbf{z}} \times \mathbf{E}_T &= -\frac{j\beta}{k_c^2} (\hat{\mathbf{z}} \times \nabla_T E_z + \eta_{TE} \nabla_T H_z) \\ \mathbf{H}_T &= -\frac{j\beta}{k_c^2} \left( \frac{1}{\eta_{TM}} \hat{\mathbf{z}} \times \nabla_T E_z + \nabla_T H_z \right)\end{aligned}\quad (9.1.15)$$

Using the result  $\hat{\mathbf{z}} \times (\hat{\mathbf{z}} \times \mathbf{E}_T) = -\mathbf{E}_T$ , we solve for  $\mathbf{E}_T$  and  $\mathbf{H}_T$ :

$$\begin{aligned}\mathbf{E}_T &= -\frac{j\beta}{k_c^2} (\nabla_T E_z - \eta_{TE} \hat{\mathbf{z}} \times \nabla_T H_z) \\ \mathbf{H}_T &= -\frac{j\beta}{k_c^2} \left( \nabla_T H_z + \frac{1}{\eta_{TM}} \hat{\mathbf{z}} \times \nabla_T E_z \right)\end{aligned} \quad (\text{transverse fields}) \quad (9.1.16)$$

An alternative and useful way of writing these equations is to form the following linear combinations, which are equivalent to Eq. (9.1.6):

$$\begin{aligned}\mathbf{H}_T - \frac{1}{\eta_{TM}} \hat{\mathbf{z}} \times \mathbf{E}_T &= \frac{j}{\beta} \nabla_T H_z \\ \mathbf{E}_T - \eta_{TE} \mathbf{H}_T \times \hat{\mathbf{z}} &= \frac{j}{\beta} \nabla_T E_z\end{aligned}\quad (9.1.17)$$

So far we only used the first two of Maxwell's equations (9.1.5) and expressed  $\mathbf{E}_T, \mathbf{H}_T$  in terms of  $E_z, H_z$ . Using (9.1.16), it is easily shown that the left-hand sides of the remaining four of Eqs. (9.1.5) take the forms:

$$\begin{aligned}\nabla_T \times \mathbf{E}_T + j\omega\mu \hat{\mathbf{z}} H_z &= \frac{j\omega\mu}{k_c^2} \hat{\mathbf{z}} (\nabla_T^2 H_z + k_c^2 H_z) \\ \nabla_T \times \mathbf{H}_T - j\omega\epsilon \hat{\mathbf{z}} E_z &= -\frac{j\omega\epsilon}{k_c^2} \hat{\mathbf{z}} (\nabla_T^2 E_z + k_c^2 E_z) \\ \nabla_T \cdot \mathbf{E}_T - j\beta E_z &= -\frac{j\beta}{k_c^2} (\nabla_T^2 E_z + k_c^2 E_z) \\ \nabla_T \cdot \mathbf{H}_T - j\beta H_z &= -\frac{j\beta}{k_c^2} (\nabla_T^2 H_z + k_c^2 H_z)\end{aligned}$$

where  $\nabla_T^2$  is the two-dimensional Laplacian operator:

$$\nabla_T^2 = \nabla_T \cdot \nabla_T = \partial_x^2 + \partial_y^2 \quad (9.1.18)$$

and we used the vectorial identities  $\nabla_T \times \nabla_T E_z = 0$ ,  $\nabla_T \times (\hat{z} \times \nabla_T H_z) = \hat{z} \nabla_T^2 H_z$ , and  $\nabla_T \cdot (\hat{z} \times \nabla_T H_z) = 0$ .

It follows that in order to satisfy all of the last four of Maxwell's equations (9.1.5), it is necessary that the longitudinal fields  $E_z(x, y)$ ,  $H_z(x, y)$  satisfy the two-dimensional Helmholtz equations:

$$\begin{cases} \nabla_T^2 E_z + k_c^2 E_z = 0 \\ \nabla_T^2 H_z + k_c^2 H_z = 0 \end{cases} \quad (\text{Helmholtz equations}) \quad (9.1.19)$$

These equations are to be solved subject to the appropriate *boundary conditions* for each waveguide type. Once, the fields  $E_z, H_z$  are known, the transverse fields  $E_T, H_T$  are computed from Eq. (9.1.16), resulting in a complete solution of Maxwell's equations for the guiding structure. To get the full  $x, y, z, t$  dependence of the propagating fields, the above solutions must be multiplied by the factor  $e^{j\omega t - j\beta z}$ .

The cross-sections of practical waveguiding systems have either cartesian or cylindrical symmetry, such as the rectangular waveguide or the coaxial cable. Below, we summarize the form of the above solutions in the two types of coordinate systems.

### Cartesian Coordinates

The cartesian component version of Eqs. (9.1.16) and (9.1.19) is straightforward. Using the identity  $\hat{z} \times \nabla_T H_z = \hat{y} \partial_x H_z - \hat{x} \partial_y H_z$ , we obtain for the longitudinal components:

$$\begin{cases} (\partial_x^2 + \partial_y^2) E_z + k_c^2 E_z = 0 \\ (\partial_x^2 + \partial_y^2) H_z + k_c^2 H_z = 0 \end{cases} \quad (9.1.20)$$

Eq. (9.1.16) becomes for the transverse components:

$$\begin{cases} E_x = -\frac{j\beta}{k_c^2} (\partial_x E_z + \eta_{TE} \partial_y H_z) \\ E_y = -\frac{j\beta}{k_c^2} (\partial_y E_z - \eta_{TE} \partial_x H_z) \end{cases}, \quad \begin{cases} H_x = -\frac{j\beta}{k_c^2} (\partial_x H_z - \frac{1}{\eta_{TM}} \partial_y E_z) \\ H_y = -\frac{j\beta}{k_c^2} (\partial_y H_z + \frac{1}{\eta_{TM}} \partial_x E_z) \end{cases} \quad (9.1.21)$$

### Cylindrical Coordinates

The relationship between cartesian and cylindrical coordinates is shown in Fig. 9.1.1. From the triangle in the figure, we have  $x = \rho \cos \phi$  and  $y = \rho \sin \phi$ . The transverse gradient and Laplace operator are in cylindrical coordinates:

$$\nabla_T = \hat{\rho} \frac{\partial}{\partial \rho} + \hat{\phi} \frac{1}{\rho} \frac{\partial}{\partial \phi}, \quad \nabla_T^2 = \frac{1}{\rho} \frac{\partial}{\partial \rho} \left( \rho \frac{\partial}{\partial \rho} \right) + \frac{1}{\rho^2} \frac{\partial^2}{\partial \phi^2} \quad (9.1.22)$$

The Helmholtz equations (9.1.19) now read:

## 9.2. Power Transfer and Attenuation

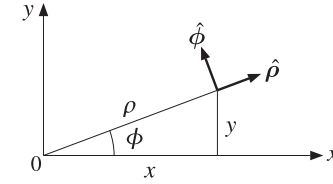


Fig. 9.1.1 Cylindrical coordinates.

$$\begin{cases} \frac{1}{\rho} \frac{\partial}{\partial \rho} \left( \rho \frac{\partial E_z}{\partial \rho} \right) + \frac{1}{\rho^2} \frac{\partial^2 E_z}{\partial \phi^2} + k_c^2 E_z = 0 \\ \frac{1}{\rho} \frac{\partial}{\partial \rho} \left( \rho \frac{\partial H_z}{\partial \rho} \right) + \frac{1}{\rho^2} \frac{\partial^2 H_z}{\partial \phi^2} + k_c^2 H_z = 0 \end{cases} \quad (9.1.23)$$

Noting that  $\hat{z} \times \hat{\rho} = \hat{\phi}$  and  $\hat{z} \times \hat{\phi} = -\hat{\rho}$ , we obtain:

$$\hat{z} \times \nabla_T H_z = \hat{\phi} (\partial_\rho H_z) - \hat{\rho} \frac{1}{\rho} (\partial_\phi H_z)$$

The decomposition of a transverse vector is  $E_T = \hat{\rho} E_\rho + \hat{\phi} E_\phi$ . The cylindrical coordinates version of (9.1.16) are:

$$\begin{cases} E_\rho = -\frac{j\beta}{k_c^2} (\partial_\rho E_z - \eta_{TE} \frac{1}{\rho} \partial_\phi H_z) \\ E_\phi = -\frac{j\beta}{k_c^2} (\frac{1}{\rho} \partial_\phi E_z + \eta_{TE} \partial_\rho H_z) \end{cases}, \quad \begin{cases} H_\rho = -\frac{j\beta}{k_c^2} (\partial_\rho H_z + \frac{1}{\eta_{TM} \rho} \partial_\phi E_z) \\ H_\phi = -\frac{j\beta}{k_c^2} (\frac{1}{\rho} \partial_\phi H_z - \frac{1}{\eta_{TM}} \partial_\rho E_z) \end{cases} \quad (9.1.24)$$

For either coordinate system, the equations for  $H_T$  may be obtained from those of  $E_T$  by a so-called *duality transformation*, that is, making the substitutions:

$$E \rightarrow H, \quad H \rightarrow -E, \quad \epsilon \rightarrow \mu, \quad \mu \rightarrow \epsilon \quad (\text{duality transformation}) \quad (9.1.25)$$

These imply that  $\eta \rightarrow \eta^{-1}$  and  $\eta_{TE} \rightarrow \eta_{TM}^{-1}$ . Duality is discussed in greater detail in Sec. 17.2.

## 9.2 Power Transfer and Attenuation

With the field solutions at hand, one can determine the amount of power transmitted along the guide, as well as the transmission losses. The total power carried by the fields along the guide direction is obtained by integrating the  $z$ -component of the Poynting vector over the cross-sectional area of the guide:

$$P_T = \int_S \mathcal{P}_z dS, \quad \text{where} \quad \mathcal{P}_z = \frac{1}{2} \operatorname{Re}(\mathbf{E} \times \mathbf{H}^*) \cdot \hat{\mathbf{z}} \quad (9.2.1)$$

It is easily verified that only the transverse components of the fields contribute to the power flow, that is,  $\mathcal{P}_z$  can be written in the form:

$$\mathcal{P}_z = \frac{1}{2} \operatorname{Re}(\mathbf{E}_T \times \mathbf{H}_T^*) \cdot \hat{\mathbf{z}} \quad (9.2.2)$$

For waveguides with conducting walls, the transmission losses are due primarily to ohmic losses in (a) the conductors and (b) the dielectric medium filling the space between the conductors and in which the fields propagate. In dielectric waveguides, the losses are due to absorption and scattering by imperfections.

The transmission losses can be quantified by replacing the propagation wavenumber  $\beta$  by its complex-valued version  $\beta_c = \beta - j\alpha$ , where  $\alpha$  is the attenuation constant. The  $z$ -dependence of all the field components is replaced by:

$$e^{-j\beta z} \rightarrow e^{-j\beta_c z} = e^{-(\alpha + j\beta)z} = e^{-\alpha z} e^{-j\beta z} \quad (9.2.3)$$

The quantity  $\alpha$  is the sum of the attenuation constants arising from the various loss mechanisms. For example, if  $\alpha_d$  and  $\alpha_c$  are the attenuations due to the ohmic losses in the dielectric and in the conducting walls, then

$$\alpha = \alpha_d + \alpha_c \quad (9.2.4)$$

The ohmic losses in the dielectric can be characterized either by its loss tangent, say  $\tan \delta$ , or by its conductivity  $\sigma_d$ —the two being related by  $\sigma_d = \omega \epsilon \tan \delta$ . The effective dielectric constant of the medium is then  $\epsilon(\omega) = \epsilon - j\sigma_d/\omega = \epsilon(1 - j \tan \delta)$ . The corresponding complex-valued wavenumber  $\beta_c$  is obtained by the replacement:

$$\beta = \sqrt{\omega^2 \mu \epsilon - k_c^2} \rightarrow \beta_c = \sqrt{\omega^2 \mu \epsilon(\omega) - k_c^2}$$

For weakly conducting dielectrics, we may make the approximation:

$$\beta_c = \sqrt{\omega^2 \mu \epsilon (1 - j \frac{\sigma_d}{\omega \epsilon}) - k_c^2} = \sqrt{\beta^2 - j \omega \mu \sigma_d} = \beta \sqrt{1 - j \frac{\omega \mu \sigma_d}{\beta^2}} \approx \beta - j \frac{1}{2} \sigma_d \frac{\omega \mu}{\beta}$$

Recalling the definition  $\eta_{TE} = \omega \mu / \beta$ , we obtain for the attenuation constant:

$$\alpha_d = \frac{1}{2} \sigma_d \eta_{TE} = \frac{1}{2} \frac{\omega^2}{\beta c^2} \tan \delta = \frac{\omega \tan \delta}{2c \sqrt{1 - \omega_c^2/\omega^2}} \quad (\text{dielectric losses}) \quad (9.2.5)$$

which is similar to Eq. (2.7.2), but with the replacement  $\eta_d \rightarrow \eta_{TE}$ .

The conductor losses are more complicated to calculate. In practice, the following approximate procedure is adequate. First, the fields are determined on the assumption that the conductors are perfect.

Second, the magnetic fields on the conductor surfaces are determined and the corresponding induced surface currents are calculated by  $\mathbf{J}_s = \hat{\mathbf{n}} \times \mathbf{H}$ , where  $\hat{\mathbf{n}}$  is the outward normal to the conductor.

Third, the ohmic losses per unit conductor area are calculated by Eq. (2.8.7). Figure 9.2.1 shows such an infinitesimal conductor area  $dA = dl dz$ , where  $dl$  is along the cross-sectional periphery of the conductor. Applying Eq. (2.8.7) to this area, we have:

$$\frac{dP_{\text{loss}}}{dA} = \frac{dP_{\text{loss}}}{dl dz} = \frac{1}{2} R_s |J_s|^2 \quad (9.2.6)$$

where  $R_s$  is the surface resistance of the conductor given by Eq. (2.8.4),

$$R_s = \sqrt{\frac{\omega \mu}{2\sigma}} = \eta \sqrt{\frac{\omega \epsilon}{2\sigma}} = \frac{1}{2} \delta \omega \mu, \quad \delta = \sqrt{\frac{2}{\omega \mu \sigma}} = \text{skin depth} \quad (9.2.7)$$

Integrating Eq. (9.2.6) around the periphery of the conductor gives the power loss per unit  $z$ -length due to that conductor. Adding similar terms for all the other conductors gives the total power loss per unit  $z$ -length:

$$P'_{\text{loss}} = \frac{dP_{\text{loss}}}{dz} = \oint_{C_a} \frac{1}{2} R_s |J_s|^2 dl + \oint_{C_b} \frac{1}{2} R_s |J_s|^2 dl \quad (9.2.8)$$

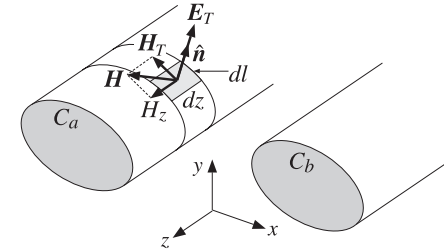


Fig. 9.2.1 Conductor surface absorbs power from the propagating fields.

where  $C_a$  and  $C_b$  indicate the peripheries of the conductors. Finally, the corresponding attenuation coefficient is calculated from Eq. (2.6.22):

$$\alpha_c = \frac{P'_{\text{loss}}}{2P_T} \quad (\text{conductor losses}) \quad (9.2.9)$$

Equations (9.2.1)–(9.2.9) provide a systematic methodology by which to calculate the transmitted power and attenuation losses in waveguides. We will apply it to several examples later on.

### 9.3 TEM, TE, and TM modes

The general solution described by Eqs. (9.1.16) and (9.1.19) is a hybrid solution with non-zero  $E_z$  and  $H_z$  components. Here, we look at the specialized forms of these equations in the cases of TEM, TE, and TM modes.

One common property of all three types of modes is that the transverse fields  $\mathbf{E}_T, \mathbf{H}_T$  are related to each other in the same way as in the case of uniform plane waves propagating in the  $z$ -direction, that is, they are perpendicular to each other, their cross-product points in the  $z$ -direction, and they satisfy:

$$\mathbf{H}_T = \frac{1}{\eta_T} \hat{\mathbf{z}} \times \mathbf{E}_T \quad (9.3.1)$$

where  $\eta_T$  is the transverse impedance of the particular mode type, that is,  $\eta, \eta_{TE}, \eta_{TM}$  in the TEM, TE, and TM cases.

Because of Eq. (9.3.1), the power flow per unit cross-sectional area described by the Poynting vector  $\mathcal{P}_z$  of Eq. (9.2.2) takes the simple form in all three cases:

$$\mathcal{P}_z = \frac{1}{2} \operatorname{Re}(\mathbf{E}_T \times \mathbf{H}_T^*) \cdot \hat{\mathbf{z}} = \frac{1}{2\eta_T} |\mathbf{E}_T|^2 = \frac{1}{2} \eta_T |\mathbf{H}_T|^2 \quad (9.3.2)$$

### TEM modes

In TEM modes, both  $E_z$  and  $H_z$  vanish, and the fields are fully transverse. One can set  $E_z = H_z = 0$  in Maxwell equations (9.1.5), or equivalently in (9.1.16), or in (9.1.17).

From any point view, one obtains the condition  $k_c^2 = 0$ , or  $\omega = \beta c$ . For example, if the right-hand sides of Eq. (9.1.17) vanish, the consistency of the system requires that  $\eta_{TE} = \eta_{TM}$ , which by virtue of Eq. (9.1.13) implies  $\omega = \beta c$ . It also implies that  $\eta_{TE}, \eta_{TM}$  must both be equal to the medium impedance  $\eta$ . Thus, the electric and magnetic fields satisfy:

$$\mathbf{H}_T = \frac{1}{\eta} \hat{\mathbf{z}} \times \mathbf{E}_T \quad (9.3.3)$$

These are the same as in the case of a uniform plane wave, except here the fields are not uniform and may have a non-trivial  $x, y$  dependence. The electric field  $\mathbf{E}_T$  is determined from the rest of Maxwell's equations (9.1.5), which read:

$$\begin{aligned} \nabla_T \times \mathbf{E}_T &= 0 \\ \nabla_T \cdot \mathbf{E}_T &= 0 \end{aligned} \quad (9.3.4)$$

These are recognized as the field equations of an equivalent two-dimensional *electrostatic* problem. Once this electrostatic solution is found,  $\mathbf{E}_T(x, y)$ , the magnetic field is constructed from Eq. (9.3.3). The time-varying propagating fields will be given by Eq. (9.1.1), with  $\omega = \beta c$ . (For backward moving fields, replace  $\beta$  by  $-\beta$ .)

We explore this electrostatic point of view further in Sec. 10.1 and discuss the cases of the coaxial, two-wire, and strip lines. Because of the relationship between  $\mathbf{E}_T$  and  $\mathbf{H}_T$ , the Poynting vector  $\mathcal{P}_z$  of Eq. (9.2.2) will be:

$$\mathcal{P}_z = \frac{1}{2} \operatorname{Re}(\mathbf{E}_T \times \mathbf{H}_T^*) \cdot \hat{\mathbf{z}} = \frac{1}{2\eta} |\mathbf{E}_T|^2 = \frac{1}{2} \eta |\mathbf{H}_T|^2 \quad (9.3.5)$$

### TE modes

TE modes are characterized by the conditions  $E_z = 0$  and  $H_z \neq 0$ . It follows from the second of Eqs. (9.1.17) that  $\mathbf{E}_T$  is completely determined from  $\mathbf{H}_T$ , that is,  $\mathbf{E}_T = \eta_{TE} \mathbf{H}_T \times \hat{\mathbf{z}}$ .

The field  $\mathbf{H}_T$  is determined from the second of (9.1.16). Thus, all field components for TE modes are obtained from the equations:

$$\begin{aligned} \nabla_T^2 H_z + k_c^2 H_z &= 0 \\ \mathbf{H}_T &= -\frac{j\beta}{k_c^2} \nabla_T H_z \\ \mathbf{E}_T &= \eta_{TE} \mathbf{H}_T \times \hat{\mathbf{z}} \end{aligned} \quad (\text{TE modes}) \quad (9.3.6)$$

The relationship of  $\mathbf{E}_T$  and  $\mathbf{H}_T$  is identical to that of uniform plane waves propagating in the  $z$ -direction, except the wave impedance is replaced by  $\eta_{TE}$ . The Poynting vector of Eq. (9.2.2) then takes the form:

$$\mathcal{P}_z = \frac{1}{2} \operatorname{Re}(\mathbf{E}_T \times \mathbf{H}_T^*) \cdot \hat{\mathbf{z}} = \frac{1}{2\eta_{TE}} |\mathbf{E}_T|^2 = \frac{1}{2} \eta_{TE} |\mathbf{H}_T|^2 = \frac{1}{2} \eta_{TE} \frac{\beta^2}{k_c^4} |\nabla_T H_z|^2 \quad (9.3.7)$$

The cartesian coordinate version of Eq. (9.3.6) is:

$$\begin{aligned} (\partial_x^2 + \partial_y^2) H_z + k_c^2 H_z &= 0 \\ H_x &= -\frac{j\beta}{k_c^2} \partial_x H_z, \quad H_y = -\frac{j\beta}{k_c^2} \partial_y H_z \\ E_x &= \eta_{TE} H_y, \quad E_y = -\eta_{TE} H_x \end{aligned} \quad (9.3.8)$$

And, the cylindrical coordinate version:

$$\begin{aligned} \frac{1}{\rho} \frac{\partial}{\partial \rho} \left( \rho \frac{\partial H_z}{\partial \rho} \right) + \frac{1}{\rho^2} \frac{\partial^2 H_z}{\partial \phi^2} + k_c^2 H_z &= 0 \\ H_\rho &= -\frac{j\beta}{k_c^2} \frac{\partial H_z}{\partial \rho}, \quad H_\phi = -\frac{j\beta}{k_c^2} \frac{1}{\rho} \frac{\partial H_z}{\partial \phi} \\ E_\rho &= \eta_{TE} H_\phi, \quad E_\phi = -\eta_{TE} H_\rho \end{aligned} \quad (9.3.9)$$

where we used  $\mathbf{H}_T \times \hat{\mathbf{z}} = (\hat{\boldsymbol{\rho}} H_\rho + \hat{\boldsymbol{\phi}} H_\phi) \times \hat{\mathbf{z}} = -\hat{\boldsymbol{\phi}} H_\rho + \hat{\boldsymbol{\rho}} H_\phi$ .

### TM modes

TM modes have  $H_z = 0$  and  $E_z \neq 0$ . It follows from the first of Eqs. (9.1.17) that  $\mathbf{H}_T$  is completely determined from  $\mathbf{E}_T$ , that is,  $\mathbf{H}_T = \eta_{TM}^{-1} \hat{\mathbf{z}} \times \mathbf{E}_T$ . The field  $\mathbf{E}_T$  is determined from the first of (9.1.16), so that all field components for TM modes are obtained from the following equations, which are dual to the TE equations (9.3.6):

$$\begin{aligned}
 \nabla_T^2 E_z + k_c^2 E_z &= 0 \\
 \mathbf{E}_T &= -\frac{j\beta}{k_c^2} \nabla_T E_z \\
 \mathbf{H}_T &= \frac{1}{\eta_{TM}} \hat{\mathbf{z}} \times \mathbf{E}_T
 \end{aligned}
 \quad (\text{TM modes}) \quad (9.3.10)$$

Again, the relationship of  $\mathbf{E}_T$  and  $\mathbf{H}_T$  is identical to that of uniform plane waves propagating in the  $z$ -direction, but the wave impedance is now  $\eta_{TM}$ . The Poynting vector takes the form:

$$P_z = \frac{1}{2} \text{Re}(\mathbf{E}_T \times \mathbf{H}_T^*) \cdot \hat{\mathbf{z}} = \frac{1}{2\eta_{TM}} |\mathbf{E}_T|^2 = \frac{1}{2\eta_{TM}} \frac{\beta^2}{k_c^4} |\nabla_T E_z|^2 \quad (9.3.11)$$

## 9.4 Rectangular Waveguides

Next, we discuss in detail the case of a rectangular hollow waveguide with conducting walls, as shown in Fig. 9.4.1. Without loss of generality, we may assume that the lengths  $a, b$  of the inner sides satisfy  $b \leq a$ . The guide is typically filled with air, but any other dielectric material  $\epsilon, \mu$  may be assumed.

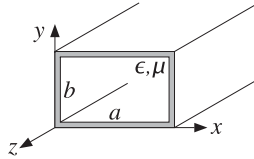


Fig. 9.4.1 Rectangular waveguide.

The simplest and dominant propagation mode is the so-called  $\text{TE}_{10}$  mode and depends only on the  $x$ -coordinate (of the longest side.) Therefore, we begin by looking for solutions of Eq. (9.3.8) that depend only on  $x$ . In this case, the Helmholtz equation reduces to:

$$\partial_x^2 H_z(x) + k_c^2 H_z(x) = 0$$

The most general solution is a linear combination of  $\cos k_c x$  and  $\sin k_c x$ . However, only the former will satisfy the boundary conditions. Therefore, the solution is:

$$H_z(x) = H_0 \cos k_c x \quad (9.4.1)$$

where  $H_0$  is a (complex-valued) constant. Because there is no  $y$ -dependence, it follows from Eq. (9.3.8) that  $\partial_y H_z = 0$ , and hence  $H_y = 0$  and  $E_x = 0$ . It also follows that:

$$H_x(x) = -\frac{j\beta}{k_c^2} \partial_x H_z = -\frac{j\beta}{k_c^2} (-k_c) H_0 \sin k_c x = \frac{j\beta}{k_c} H_0 \sin k_c x \equiv H_1 \sin k_c x$$

## 9.4. Rectangular Waveguides

Then, the corresponding electric field will be:

$$E_y(x) = -\eta_{TE} H_x(x) = -\eta_{TE} \frac{j\beta}{k_c} H_0 \sin k_c x \equiv E_0 \sin k_c x$$

where we defined the constants:

$$H_1 = \frac{j\beta}{k_c} H_0 \quad (9.4.2)$$

$$E_0 = -\eta_{TE} H_1 = -\eta_{TE} \frac{j\beta}{k_c} H_0 = -j\eta \frac{\omega}{\omega_c} H_0$$

where we used  $\eta_{TE} = \eta\omega/\beta c$ . In summary, the non-zero field components are:

$$\begin{aligned}
 H_z(x) &= H_0 \cos k_c x \\
 H_x(x) &= H_1 \sin k_c x \\
 E_y(x) &= E_0 \sin k_c x
 \end{aligned}
 \quad \Rightarrow \quad
 \begin{aligned}
 H_z(x, y, z, t) &= H_0 \cos k_c x e^{j\omega t - j\beta z} \\
 H_x(x, y, z, t) &= H_1 \sin k_c x e^{j\omega t - j\beta z} \\
 E_y(x, y, z, t) &= E_0 \sin k_c x e^{j\omega t - j\beta z}
 \end{aligned}
 \quad (9.4.3)$$

Assuming perfectly conducting walls, the boundary conditions require that there be no tangential electric field at any of the wall sides. Because the electric field is in the  $y$ -direction, it is normal to the top and bottom sides. But, it is parallel to the left and right sides. On the left side,  $x = 0$ ,  $E_y(x)$  vanishes because  $\sin k_c x$  does. On the right side,  $x = a$ , the boundary condition requires:

$$E_y(a) = E_0 \sin k_c a = 0 \quad \Rightarrow \quad \sin k_c a = 0$$

This requires that  $k_c a$  be an integral multiple of  $\pi$ :

$$k_c a = n\pi \quad \Rightarrow \quad k_c = \frac{n\pi}{a} \quad (9.4.4)$$

These are the so-called  $\text{TE}_{n0}$  modes. The corresponding cutoff frequency  $\omega_c = ck_c$ ,  $f_c = \omega_c/2\pi$ , and wavelength  $\lambda_c = 2\pi/k_c = c/f_c$  are:

$$\omega_c = \frac{cn\pi}{a}, \quad f_c = \frac{cn}{2a}, \quad \lambda_c = \frac{2a}{n} \quad (\text{TE}_{n0} \text{ modes}) \quad (9.4.5)$$

The dominant mode is the one with the lowest cutoff frequency or the longest cutoff wavelength, that is, the mode  $\text{TE}_{10}$  having  $n = 1$ . It has:

$$k_c = \frac{\pi}{a}, \quad \omega_c = \frac{c\pi}{a}, \quad f_c = \frac{c}{2a}, \quad \lambda_c = 2a \quad (\text{TE}_{10} \text{ mode}) \quad (9.4.6)$$

Fig. 9.4.2 depicts the electric field  $E_y(x) = E_0 \sin k_c x = E_0 \sin(\pi x/a)$  of this mode as a function of  $x$ .

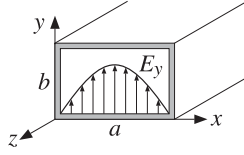


Fig. 9.4.2 Electric field inside a rectangular waveguide.

### 9.5 Higher TE and TM modes

To construct higher modes, we look for solutions of the Helmholtz equation that are factorable in their  $x$  and  $y$  dependence:

$$H_z(x, y) = F(x)G(y)$$

Then, Eq. (9.3.8) becomes:

$$F''(x)G(y) + F(x)G''(y) + k_c^2 F(x)G(y) = 0 \Rightarrow \frac{F''(x)}{F(x)} + \frac{G''(y)}{G(y)} + k_c^2 = 0 \quad (9.5.1)$$

Because these must be valid for all  $x, y$  (inside the guide), the  $F$ - and  $G$ -terms must be constants, independent of  $x$  and  $y$ . Thus, we write:

$$\frac{F''(x)}{F(x)} = -k_x^2, \quad \frac{G''(y)}{G(y)} = -k_y^2 \quad \text{or}$$

$$F''(x) + k_x^2 F(x) = 0, \quad G''(y) + k_y^2 G(y) = 0 \quad (9.5.2)$$

where the constants  $k_x^2$  and  $k_y^2$  are constrained from Eq. (9.5.1) to satisfy:

$$k_c^2 = k_x^2 + k_y^2 \quad (9.5.3)$$

The most general solutions of (9.5.2) that will satisfy the TE boundary conditions are  $\cos k_x x$  and  $\cos k_y y$ . Thus, the longitudinal magnetic field will be:

$$H_z(x, y) = H_0 \cos k_x x \cos k_y y \quad (\text{TE}_{nm} \text{ modes}) \quad (9.5.4)$$

It then follows from the rest of the equations (9.3.8) that:

$$\begin{aligned} H_x(x, y) &= H_1 \sin k_x x \cos k_y y & E_x(x, y) &= E_1 \cos k_x x \sin k_y y \\ H_y(x, y) &= H_2 \cos k_x x \sin k_y y & E_y(x, y) &= E_2 \sin k_x x \cos k_y y \end{aligned} \quad (9.5.5)$$

where we defined the constants:

$$\begin{aligned} H_1 &= \frac{j\beta k_x}{k_c^2} H_0, & H_2 &= \frac{j\beta k_y}{k_c^2} H_0 \\ E_1 &= \eta_{TE} H_2 = j\eta \frac{\omega k_y}{\omega_c k_c} H_0, & E_2 &= -\eta_{TE} H_1 = -j\eta \frac{\omega k_x}{\omega_c k_c} H_0 \end{aligned}$$

### 9.5. Higher TE and TM modes

The boundary conditions are that  $E_y$  vanish on the right wall,  $x = a$ , and that  $E_x$  vanish on the top wall,  $y = b$ , that is,

$$E_y(a, y) = E_{0y} \sin k_x a \cos k_y y = 0, \quad E_x(x, b) = E_{0x} \cos k_x x \sin k_y b = 0$$

The conditions require that  $k_x a$  and  $k_y b$  be integral multiples of  $\pi$ :

$$k_x a = n\pi, \quad k_y b = m\pi \Rightarrow \boxed{k_x = \frac{n\pi}{a}, \quad k_y = \frac{m\pi}{b}} \quad (9.5.6)$$

These correspond to the  $\text{TE}_{nm}$  modes. Thus, the cutoff wavenumbers of these modes  $k_c = \sqrt{k_x^2 + k_y^2}$  take on the quantized values:

$$k_c = \sqrt{\left(\frac{n\pi}{a}\right)^2 + \left(\frac{m\pi}{b}\right)^2} \quad (\text{TE}_{nm} \text{ modes}) \quad (9.5.7)$$

The cutoff frequencies  $f_{nm} = \omega_c/2\pi = ck_c/2\pi$  and wavelengths  $\lambda_{nm} = c/f_{nm}$  are:

$$f_{nm} = c \sqrt{\left(\frac{n}{2a}\right)^2 + \left(\frac{m}{2b}\right)^2}, \quad \lambda_{nm} = \frac{1}{\sqrt{\left(\frac{n}{2a}\right)^2 + \left(\frac{m}{2b}\right)^2}} \quad (9.5.8)$$

The  $\text{TE}_{0m}$  modes are similar to the  $\text{TE}_{n0}$  modes, but with  $x$  and  $a$  replaced by  $y$  and  $b$ . The family of TM modes can also be constructed in a similar fashion from Eq. (9.3.10).

Assuming  $E_z(x, y) = F(x)G(y)$ , we obtain the same equations (9.5.2). Because  $E_z$  is parallel to all walls, we must now choose the solutions  $\sin k_x$  and  $\sin k_y y$ . Thus, the longitudinal electric fields is:

$$E_z(x, y) = E_0 \sin k_x x \sin k_y y \quad (\text{TM}_{nm} \text{ modes}) \quad (9.5.9)$$

The rest of the field components can be worked out from Eq. (9.3.10) and one finds that they are given by the same expressions as (9.5.5), except now the constants are determined in terms of  $E_0$ :

$$\begin{aligned} E_1 &= -\frac{j\beta k_x}{k_c^2} E_0, & E_2 &= -\frac{j\beta k_y}{k_c^2} E_0 \\ H_1 &= -\frac{1}{\eta_{TM}} E_2 = \frac{j\omega k_y}{\omega_c k_c} \frac{1}{\eta} E_0, & H_2 &= \frac{1}{\eta_{TM}} E_1 = -\frac{j\omega k_x}{\omega_c k_c} \frac{1}{\eta} H_0 \end{aligned}$$

where we used  $\eta_{TM} = \eta\beta c/\omega$ . The boundary conditions on  $E_x, E_y$  are the same as before, and in addition, we must require that  $E_z$  vanish on all walls.

These conditions imply that  $k_x, k_y$  will be given by Eq. (9.5.6), except both  $n$  and  $m$  must be non-zero (otherwise  $E_z$  would vanish identically.) Thus, the cutoff frequencies and wavelengths are the same as in Eq. (9.5.8).

Waveguide modes can be excited by inserting small probes at the beginning of the waveguide. The probes are chosen to generate an electric field that resembles the field of the desired mode.



## 9.6 Operating Bandwidth

All waveguiding systems are operated in a frequency range that ensures that only the *lowest* mode can propagate. If several modes can propagate simultaneously,<sup>†</sup> one has no control over which modes will actually be carrying the transmitted signal. This may cause undue amounts of dispersion, distortion, and erratic operation.

A mode with cutoff frequency  $\omega_c$  will propagate only if its frequency is  $\omega \geq \omega_c$ , or  $\lambda < \lambda_c$ . If  $\omega < \omega_c$ , the wave will attenuate exponentially along the guide direction. This follows from the  $\omega, \beta$  relationship (9.1.10):

$$\omega^2 = \omega_c^2 + \beta^2 c^2 \Rightarrow \beta^2 = \frac{\omega^2 - \omega_c^2}{c^2}$$

If  $\omega \geq \omega_c$ , the wavenumber  $\beta$  is real-valued and the wave will propagate. But if  $\omega < \omega_c$ ,  $\beta$  becomes imaginary, say,  $\beta = -j\alpha$ , and the wave will attenuate in the  $z$ -direction, with a penetration depth  $\delta = 1/\alpha$ :

$$e^{-j\beta z} = e^{-\alpha z}$$

If the frequency  $\omega$  is greater than the cutoff frequencies of several modes, then all of these modes can propagate. Conversely, if  $\omega$  is less than all cutoff frequencies, then none of the modes can propagate.

If we arrange the cutoff frequencies in increasing order,  $\omega_{c1} < \omega_{c2} < \omega_{c3} < \dots$ , then, to ensure single-mode operation, the frequency must be restricted to the interval  $\omega_{c1} < \omega < \omega_{c2}$ , so that only the lowest mode will propagate. This interval defines the *operating bandwidth* of the guide.

These remarks apply to all waveguiding systems, not just hollow conducting waveguides. For example, in coaxial cables the lowest mode is the TEM mode having no cutoff frequency,  $\omega_{c1} = 0$ . However, TE and TM modes with non-zero cutoff frequencies do exist and place an upper limit on the usable bandwidth of the TEM mode. Similarly, in optical fibers, the lowest mode has no cutoff, and the single-mode bandwidth is determined by the next cutoff frequency.

In rectangular waveguides, the smallest cutoff frequencies are  $f_{10} = c/2a$ ,  $f_{20} = c/a = 2f_{10}$ , and  $f_{01} = c/2b$ . Because we assumed that  $b \leq a$ , it follows that always  $f_{10} \leq f_{01}$ . If  $b \leq a/2$ , then  $1/a \leq 1/2b$  and therefore,  $f_{20} \leq f_{01}$ , so that the two lowest cutoff frequencies are  $f_{10}$  and  $f_{20}$ .

On the other hand, if  $a/2 \leq b \leq a$ , then  $f_{01} \leq f_{20}$  and the two smallest frequencies are  $f_{10}$  and  $f_{01}$  (except when  $b = a$ , in which case  $f_{01} = f_{10}$  and the smallest frequencies are  $f_{10}$  and  $f_{20}$ .) The two cases  $b \leq a/2$  and  $b \geq a/2$  are depicted in Fig. 9.6.1.

It is evident from this figure that in order to achieve the *widest* possible usable bandwidth for the TE<sub>10</sub> mode, the guide dimensions must satisfy  $b \leq a/2$  so that the bandwidth is the interval  $[f_c, 2f_c]$ , where  $f_c = f_{10} = c/2a$ . In terms of the wavelength  $\lambda = c/f$ , the operating bandwidth becomes:  $0.5 \leq a/\lambda \leq 1$ , or,  $a \leq \lambda \leq 2a$ .

We will see later that the total amount of transmitted power in this mode is proportional to the cross-sectional area of the guide,  $ab$ . Thus, if in addition to having the

<sup>†</sup>Murphy's law for waveguides states that "if a mode can propagate, it will."

## 9.7. Power Transfer, Energy Density, and Group Velocity

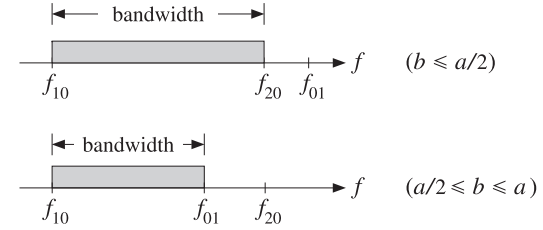


Fig. 9.6.1 Operating bandwidth in rectangular waveguides.

widest bandwidth, we also require to have the *maximum power* transmitted, the dimension  $b$  must be chosen to be as large as possible, that is,  $b = a/2$ . Most practical guides follow these side proportions.

If there is a "canonical" guide, it will have  $b = a/2$  and be operated at a frequency that lies in the middle of the operating band  $[f_c, 2f_c]$ , that is,

$$f = 1.5f_c = 0.75 \frac{c}{a} \quad (9.6.1)$$

Table 9.6.1 lists some standard air-filled rectangular waveguides with their naming designations, inner side dimensions  $a, b$  in inches, cutoff frequencies in GHz, minimum and maximum recommended operating frequencies in GHz, power ratings, and attenuations in dB/m (the power ratings and attenuations are representative over each operating band.) We have chosen one example from each microwave band.

name	$a$	$b$	$f_c$	$f_{\min}$	$f_{\max}$	band	$P$	$\alpha$
WR-510	5.10	2.55	1.16	1.45	2.20	L	9 MW	0.007
WR-284	2.84	1.34	2.08	2.60	3.95	S	2.7 MW	0.019
WR-159	1.59	0.795	3.71	4.64	7.05	C	0.9 MW	0.043
WR-90	0.90	0.40	6.56	8.20	12.50	X	250 kW	0.110
WR-62	0.622	0.311	9.49	11.90	18.00	Ku	140 kW	0.176
WR-42	0.42	0.17	14.05	17.60	26.70	K	50 kW	0.370
WR-28	0.28	0.14	21.08	26.40	40.00	Ka	27 kW	0.583
WR-15	0.148	0.074	39.87	49.80	75.80	V	7.5 kW	1.52
WR-10	0.10	0.05	59.01	73.80	112.00	W	3.5 kW	2.74

Table 9.6.1 Characteristics of some standard air-filled rectangular waveguides.

## 9.7 Power Transfer, Energy Density, and Group Velocity

Next, we calculate the time-averaged power transmitted in the TE<sub>10</sub> mode. We also calculate the energy density of the fields and determine the velocity by which electromagnetic energy flows down the guide and show that it is equal to the group velocity. We recall that the non-zero field components are:

$$H_z(x) = H_0 \cos k_c x, \quad H_x(x) = H_1 \sin k_c x, \quad E_y(x) = E_0 \sin k_c x \quad (9.7.1)$$

where

$$H_1 = \frac{j\beta}{k_c} H_0, \quad E_0 = -\eta_{TE} H_1 = -j\eta \frac{\omega}{\omega_c} H_0 \quad (9.7.2)$$

The Poynting vector is obtained from the general result of Eq. (9.3.7):

$$\mathcal{P}_z = \frac{1}{2\eta_{TE}} |E_T|^2 = \frac{1}{2\eta_{TE}} |E_y(x)|^2 = \frac{1}{2\eta_{TE}} |E_0|^2 \sin^2 k_c x$$

The transmitted power is obtained by integrating  $\mathcal{P}_z$  over the cross-sectional area of the guide:

$$P_T = \int_0^a \int_0^b \frac{1}{2\eta_{TE}} |E_0|^2 \sin^2 k_c x \, dx dy$$

Noting the definite integral,

$$\int_0^a \sin^2 k_c x \, dx = \int_0^a \sin^2 \left( \frac{\pi x}{a} \right) dx = \frac{a}{2} \quad (9.7.3)$$

and using  $\eta_{TE} = \eta\omega/\beta c = \eta/\sqrt{1 - \omega_c^2/\omega^2}$ , we obtain:

$$P_T = \frac{1}{4\eta_{TE}} |E_0|^2 ab = \frac{1}{4\eta} |E_0|^2 ab \sqrt{1 - \frac{\omega_c^2}{\omega^2}} \quad (\text{transmitted power}) \quad (9.7.4)$$

We may also calculate the distribution of electromagnetic energy along the guide, as measured by the time-averaged energy density. The energy densities of the electric and magnetic fields are:

$$w_e = \frac{1}{2} \operatorname{Re} \left( \frac{1}{2} \epsilon \mathbf{E} \cdot \mathbf{E}^* \right) = \frac{1}{4} \epsilon |E_y|^2$$

$$w_m = \frac{1}{2} \operatorname{Re} \left( \frac{1}{2} \mu \mathbf{H} \cdot \mathbf{H}^* \right) = \frac{1}{4} \mu (|H_x|^2 + |H_z|^2)$$

Inserting the expressions for the fields, we find:

$$w_e = \frac{1}{4} \epsilon |E_0|^2 \sin^2 k_c x, \quad w_m = \frac{1}{4} \mu (|H_1|^2 \sin^2 k_c x + |H_0|^2 \cos^2 k_c x)$$

Because these quantities represent the energy per unit volume, if we integrate them over the cross-sectional area of the guide, we will obtain the energy distributions per unit  $z$ -length. Using the integral (9.7.3) and an identical one for the cosine case, we find:

$$W'_e = \int_0^a \int_0^b W_e(x, y) \, dx dy = \int_0^a \int_0^b \frac{1}{4} \epsilon |E_0|^2 \sin^2 k_c x \, dx dy = \frac{1}{8} \epsilon |E_0|^2 ab$$

$$W'_m = \int_0^a \int_0^b \frac{1}{4} \mu (|H_1|^2 \sin^2 k_c x + |H_0|^2 \cos^2 k_c x) \, dx dy = \frac{1}{8} \mu (|H_1|^2 + |H_0|^2) ab$$

Although these expressions look different, they are actually equal,  $W'_e = W'_m$ . Indeed, using the property  $\beta^2/k_c^2 + 1 = (\beta^2 + k_c^2)/k_c^2 = k^2/k_c^2 = \omega^2/\omega_c^2$  and the relationships between the constants in (9.7.1), we find:

$$\mu (|H_1|^2 + |H_0|^2) = \mu (|H_0|^2 \frac{\beta^2}{k_c^2} + |H_0|^2) = \mu |H_0|^2 \frac{\omega^2}{\omega_c^2} = \frac{\mu}{\eta^2} |E_0|^2 = \epsilon |E_0|^2$$

The equality of the electric and magnetic energies is a general property of waveguiding systems. We also encountered it in Sec. 2.3 for uniform plane waves. The total energy density per unit length will be:

$$W' = W'_e + W'_m = 2W'_e = \frac{1}{4} \epsilon |E_0|^2 ab \quad (9.7.5)$$

According to the general relationship between flux, density, and transport velocity given in Eq. (1.5.2), the energy transport velocity will be the ratio  $v_{\text{en}} = P_T/W'$ . Using Eqs. (9.7.4) and (9.7.5) and noting that  $1/\eta\epsilon = 1/\sqrt{\mu\epsilon} = c$ , we find:

$$v_{\text{en}} = \frac{P_T}{W'} = c \sqrt{1 - \frac{\omega_c^2}{\omega^2}} \quad (\text{energy transport velocity}) \quad (9.7.6)$$

This is equal to the *group velocity* of the propagating mode. For any dispersion relationship between  $\omega$  and  $\beta$ , the group and phase velocities are defined by

$$v_{\text{gr}} = \frac{d\omega}{d\beta}, \quad v_{\text{ph}} = \frac{\omega}{\beta} \quad (\text{group and phase velocities}) \quad (9.7.7)$$

For uniform plane waves and TEM transmission lines, we have  $\omega = \beta c$ , so that  $v_{\text{gr}} = v_{\text{ph}} = c$ . For a rectangular waveguide, we have  $\omega^2 = \omega_c^2 + \beta^2 c^2$ . Taking differentials of both sides, we find  $2\omega d\omega = 2c^2 \beta d\beta$ , which gives:

$$v_{\text{gr}} = \frac{d\omega}{d\beta} = \frac{\beta c^2}{\omega} = c \sqrt{1 - \frac{\omega_c^2}{\omega^2}} \quad (9.7.8)$$

where we used Eq. (9.1.10). Thus, the energy transport velocity is equal to the group velocity,  $v_{\text{en}} = v_{\text{gr}}$ . We note that  $v_{\text{gr}} = \beta c^2/\omega = c^2/v_{\text{ph}}$ , or

$$v_{\text{gr}} v_{\text{ph}} = c^2 \quad (9.7.9)$$

The energy or group velocity satisfies  $v_{\text{gr}} \leq c$ , whereas  $v_{\text{ph}} \geq c$ . Information transmission down the guide is by the group velocity and, consistent with the theory of relativity, it is less than  $c$ .

## 9.8 Power Attenuation

In this section, we calculate the attenuation coefficient due to the ohmic losses of the conducting walls following the procedure outlined in Sec. 9.2. The losses due to the filling dielectric can be determined from Eq. (9.2.5).

The field expressions (9.4.3) were derived assuming the boundary conditions for perfectly conducting wall surfaces. The induced surface currents on the inner walls of the waveguide are given by  $\mathbf{J}_s = \hat{\mathbf{n}} \times \mathbf{H}$ , where the unit vector  $\hat{\mathbf{n}}$  is  $\pm\hat{\mathbf{x}}$  and  $\pm\hat{\mathbf{y}}$  on the left/right and bottom/top walls, respectively.

The surface currents and tangential magnetic fields are shown in Fig. 9.8.1. In particular, on the bottom and top walls, we have:

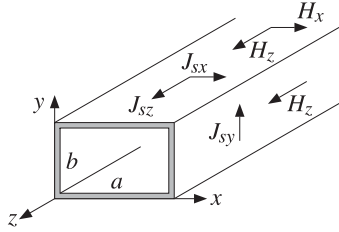


Fig. 9.8.1 Currents on waveguide walls.

$$\mathbf{J}_s = \pm\hat{\mathbf{y}} \times \mathbf{H} = \pm\hat{\mathbf{y}} \times (\hat{\mathbf{x}}H_x + \hat{\mathbf{z}}H_z) = \pm(-\hat{\mathbf{z}}H_x + \hat{\mathbf{x}}H_z) = \pm(-\hat{\mathbf{z}}H_1 \sin k_c x + \hat{\mathbf{x}}H_0 \cos k_c x)$$

Similarly, on the left and right walls:

$$\mathbf{J}_s = \pm\hat{\mathbf{x}} \times \mathbf{H} = \pm\hat{\mathbf{x}} \times (\hat{\mathbf{x}}H_x + \hat{\mathbf{z}}H_z) = \mp\hat{\mathbf{y}}H_z = \mp\hat{\mathbf{y}}H_0 \cos k_c x$$

At  $x = 0$  and  $x = a$ , this gives  $\mathbf{J}_s = \mp\hat{\mathbf{y}}(\pm H_0) = \hat{\mathbf{y}}H_0$ . Thus, the magnitudes of the surface currents are on the four walls:

$$|\mathbf{J}_s|^2 = \begin{cases} |H_0|^2, & \text{(left and right walls)} \\ |H_0|^2 \cos^2 k_c x + |H_1|^2 \sin^2 k_c x, & \text{(top and bottom walls)} \end{cases}$$

The power loss per unit  $z$ -length is obtained from Eq. (9.2.8) by integrating  $|\mathbf{J}_s|^2$  around the four walls, that is,

$$\begin{aligned} P'_{\text{loss}} &= 2\frac{1}{2}R_s \int_0^a |\mathbf{J}_s|^2 dx + 2\frac{1}{2}R_s \int_0^b |\mathbf{J}_s|^2 dy \\ &= R_s \int_0^a (|H_0|^2 \cos^2 k_c x + |H_1|^2 \sin^2 k_c x) dx + R_s \int_0^b |H_0|^2 dy \\ &= R_s \frac{a}{2} (|H_0|^2 + |H_1|^2) + R_s b |H_0|^2 = \frac{R_s a}{2} (|H_0|^2 + |H_1|^2) + \frac{2b}{a} |H_0|^2 \end{aligned}$$

Using  $|H_0|^2 + |H_1|^2 = |E_0|^2/\eta^2$  from Sec. 9.7, and  $|H_0|^2 = (|E_0|^2/\eta^2)\omega_c^2/\omega^2$ , which follows from Eq. (9.4.2), we obtain:

$$P'_{\text{loss}} = \frac{R_s a |E_0|^2}{2\eta^2} \left( 1 + \frac{2b}{a} \frac{\omega_c^2}{\omega^2} \right)$$

The attenuation constant is computed from Eqs. (9.2.9) and (9.7.4):

$$\alpha_c = \frac{P'_{\text{loss}}}{2P_T} = \frac{\frac{R_s a |E_0|^2}{2\eta^2} \left( 1 + \frac{2b}{a} \frac{\omega_c^2}{\omega^2} \right)}{2\frac{1}{4\eta} |E_0|^2 ab \sqrt{1 - \frac{\omega_c^2}{\omega^2}}}$$

which gives:

$$\alpha_c = \frac{R_s}{\eta b} \frac{\left( 1 + \frac{2b}{a} \frac{\omega_c^2}{\omega^2} \right)}{\sqrt{1 - \frac{\omega_c^2}{\omega^2}}} \quad \text{(attenuation of TE}_{10} \text{ mode)} \quad (9.8.1)$$

This is in units of nepers/m. Its value in dB/m is obtained by  $\alpha_{\text{dB}} = 8.686\alpha_c$ . For a given ratio  $a/b$ ,  $\alpha_c$  increases with decreasing  $b$ , thus the smaller the guide dimensions, the larger the attenuation. This trend is noted in Table 9.6.1.

The main tradeoffs in a waveguiding system are that as the operating frequency  $f$  increases, the dimensions of the guide must decrease in order to maintain the operating band  $f_c \leq f \leq 2f_c$ , but then the attenuation increases and the transmitted power decreases as it is proportional to the guide's area.

**Example 9.8.1:** Design a rectangular air-filled waveguide to be operated at 5 GHz, then, redesign it to be operated at 10 GHz. The operating frequency must lie in the middle of the operating band. Calculate the guide dimensions, the attenuation constant in dB/m, and the maximum transmitted power assuming the maximum electric field is one-half of the dielectric strength of air. Assume copper walls with conductivity  $\sigma = 5.8 \times 10^7$  S/m.

**Solution:** If  $f$  is in the middle of the operating band,  $f_c \leq f \leq 2f_c$ , where  $f_c = c/2a$ , then  $f = 1.5f_c = 0.75c/a$ . Solving for  $a$ , we find

$$a = \frac{0.75c}{f} = \frac{0.75 \times 30 \text{ GHz cm}}{5} = 4.5 \text{ cm}$$

For maximum power transfer, we require  $b = a/2 = 2.25$  cm. Because  $\omega = 1.5\omega_c$ , we have  $\omega_c/\omega = 2/3$ . Then, Eq. (9.8.1) gives  $\alpha_c = 0.037$  dB/m. The dielectric strength of air is 3 MV/m. Thus, the maximum allowed electric field in the guide is  $E_0 = 1.5$  MV/m. Then, Eq. (9.7.4) gives  $P_T = 1.12$  MW.

At 10 GHz, because  $f$  is doubled, the guide dimensions are halved,  $a = 2.25$  and  $b = 1.125$  cm. Because  $R_s$  depends on  $f$  like  $f^{1/2}$ , it will increase by a factor of  $\sqrt{2}$ . Then, the factor  $R_s/b$  will increase by a factor of  $2\sqrt{2}$ . Thus, the attenuation will increase to the value  $\alpha_c = 0.037 \cdot 2\sqrt{2} = 0.104$  dB/m. Because the area  $ab$  is reduced by a factor of four, so will the power,  $P_T = 1.12/4 = 0.28$  MW = 280 kW.

The results of these two cases are consistent with the values quoted in Table 9.6.1 for the C-band and X-band waveguides, WR-159 and WR-90.  $\square$

**Example 9.8.2: WR-159 Waveguide.** Consider the C-band WR-159 air-filled waveguide whose characteristics were listed in Table 9.6.1. Its inner dimensions are  $a = 1.59$  and  $b = a/2 = 0.795$  inches, or, equivalently,  $a = 4.0386$  and  $b = 2.0193$  cm.

The cutoff frequency of the TE<sub>10</sub> mode is  $f_c = c/2a = 3.71$  GHz. The maximum operating bandwidth is the interval  $[f_c, 2f_c] = [3.71, 7.42]$  GHz, and the recommended interval is  $[4.64, 7.05]$  GHz.

Assuming copper walls with conductivity  $\sigma = 5.8 \times 10^7$  S/m, the calculated attenuation constant  $\alpha_c$  from Eq. (9.8.1) is plotted in dB/m versus frequency in Fig. 9.8.2.

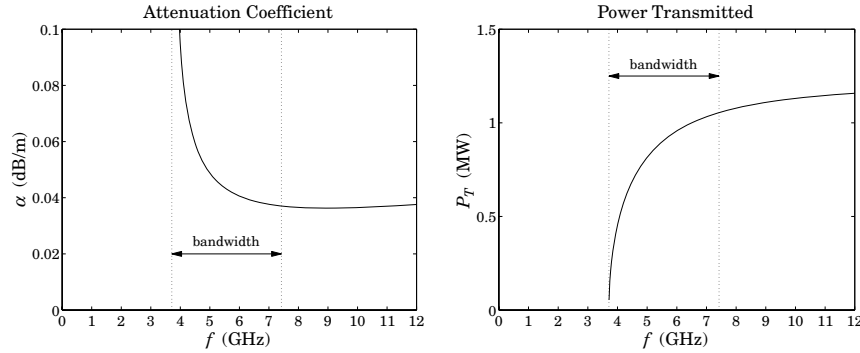


Fig. 9.8.2 Attenuation constant and transmitted power in a WR-159 waveguide.

The power transmitted  $P_T$  is calculated from Eq. (9.7.4) assuming a maximum breakdown voltage of  $E_0 = 1.5$  MV/m, which gives a safety factor of two over the dielectric breakdown of air of 3 MV/m. The power in megawatt scales is plotted in Fig. 9.8.2.

Because of the factor  $\sqrt{1 - \omega_c^2/\omega^2}$  in the denominator of  $\alpha_c$  and the numerator of  $P_T$ , the attenuation constant becomes very large near the cutoff frequency, while the power is almost zero. A physical explanation of this behavior is given in the next section.  $\square$

## 9.9 Reflection Model of Waveguide Propagation

An intuitive model for the TE<sub>10</sub> mode can be derived by considering a TE-polarized uniform plane wave propagating in the  $z$ -direction by obliquely bouncing back and forth between the left and right walls of the waveguide, as shown in Fig. 9.9.1.

If  $\theta$  is the angle of incidence, then the incident and reflected (from the right wall) wavevectors will be:

$$\begin{aligned}\mathbf{k} &= \hat{\mathbf{x}}k_x + \hat{\mathbf{z}}k_z = \hat{\mathbf{x}}k \cos \theta + \hat{\mathbf{z}}k \sin \theta \\ \mathbf{k}' &= -\hat{\mathbf{x}}k_x + \hat{\mathbf{z}}k_z = -\hat{\mathbf{x}}k \cos \theta + \hat{\mathbf{z}}k \sin \theta\end{aligned}$$

The electric and magnetic fields will be the sum of an incident and a reflected component of the form:

$$\begin{aligned}E &= \hat{\mathbf{y}}E_1 e^{-jk \cdot \mathbf{r}} + \hat{\mathbf{y}}E'_1 e^{-jk' \cdot \mathbf{r}} = \hat{\mathbf{y}}E_1 e^{-jk_x x} e^{-jk_z z} + \hat{\mathbf{y}}E'_1 e^{jk_x x} e^{-jk_z z} = E_1 + E'_1 \\ H &= \frac{1}{\eta} \hat{\mathbf{k}} \times E_1 + \frac{1}{\eta} \hat{\mathbf{k}}' \times E'_1\end{aligned}$$

## 9.9. Reflection Model of Waveguide Propagation

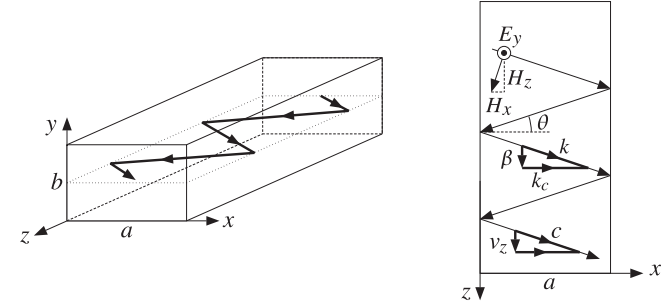


Fig. 9.9.1 Reflection model of TE<sub>10</sub> mode.

where the electric field was taken to be polarized in the  $y$  direction. These field expressions become component-wise:

$$\begin{aligned}E_y &= (E_1 e^{-jk_x x} + E'_1 e^{jk_x x}) e^{-jk_z z} \\ H_x &= -\frac{1}{\eta} \sin \theta (E_1 e^{-jk_x x} + E'_1 e^{jk_x x}) e^{-jk_z z} \\ H_z &= \frac{1}{\eta} \cos \theta (E_1 e^{-jk_x x} - E'_1 e^{jk_x x}) e^{-jk_z z}\end{aligned}\quad (9.9.1)$$

The boundary condition on the left wall,  $x = 0$ , requires that  $E_1 + E'_1 = 0$ . We may write therefore,  $E_1 = -E'_1 = jE_0/2$ . Then, the above expressions simplify into:

$$\begin{aligned}E_y &= E_0 \sin k_x x e^{-jk_z z} \\ H_x &= -\frac{1}{\eta} \sin \theta E_0 \sin k_x x e^{-jk_z z} \\ H_z &= \frac{j}{\eta} \cos \theta E_0 \cos k_x x e^{-jk_z z}\end{aligned}\quad (9.9.2)$$

These are identical to Eq. (9.4.3) provided we identify  $\beta$  with  $k_z$  and  $k_c$  with  $k_x$ , as shown in Fig. 9.9.1. It follows from the wavevector triangle in the figure that the angle of incidence  $\theta$  will be given by  $\cos \theta = k_x/k = k_c/k$ , or,

$$\cos \theta = \frac{\omega_c}{\omega}, \quad \sin \theta = \sqrt{1 - \frac{\omega_c^2}{\omega^2}}\quad (9.9.3)$$

The ratio of the transverse components,  $-E_y/H_x$ , is the transverse impedance, which is recognized to be  $\eta_{TE}$ . Indeed, we have:

$$\eta_{TE} = -\frac{E_y}{H_x} = \frac{\eta}{\sin \theta} = \frac{\eta}{\sqrt{1 - \frac{\omega_c^2}{\omega^2}}}\quad (9.9.4)$$

The boundary condition on the right wall requires  $\sin k_x a = 0$ , which gives rise to the same condition as (9.4.4), that is,  $k_c a = n\pi$ .

This model clarifies also the meaning of the group velocity. The plane wave is bouncing left and right with the speed of light  $c$ . However, the component of this velocity in the  $z$ -direction will be  $v_z = c \sin \theta$ . This is equal to the group velocity. Indeed, it follows from Eq. (9.9.3) that:

$$v_z = c \sin \theta = c \sqrt{1 - \frac{\omega_c^2}{\omega^2}} = v_{gr} \quad (9.9.5)$$

Eq. (9.9.3) implies also that at  $\omega = \omega_c$ , we have  $\sin \theta = 0$ , or  $\theta = 0$ , that is, the wave is bouncing left and right at normal incidence, creating a standing wave, and does not propagate towards the  $z$ -direction. Thus, the transmitted power is zero and this also implies, through Eq. (9.2.9), that  $\alpha_c$  will be infinite.

On the other hand, for very large frequencies,  $\omega \gg \omega_c$ , the angle  $\theta$  will tend to  $90^\circ$ , causing the wave to zoom through guide almost at the speed of light.

## 9.10 Resonant Cavities

Cavity resonators are metallic enclosures that can trap electromagnetic fields. The boundary conditions on the cavity walls force the fields to exist only at certain quantized resonant frequencies. For highly conducting walls, the resonances are extremely sharp, having a very high  $Q$  of the order of 10,000.

Because of their high  $Q$ , cavities can be used not only to efficiently store electromagnetic energy at microwave frequencies, but also to act as precise oscillators and to perform precise frequency measurements.

Fig. 9.10.1 shows a rectangular cavity with  $z$ -length equal to  $l$  formed by replacing the sending and receiving ends of a waveguide by metallic walls. A forward-moving wave will bounce back and forth from these walls, resulting in a standing-wave pattern along the  $z$ -direction.

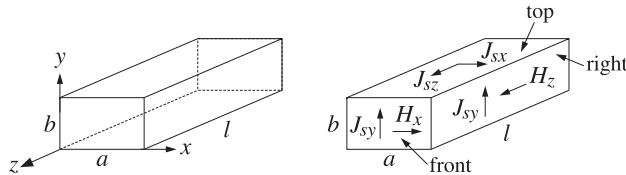


Fig. 9.10.1 Rectangular cavity resonator (and induced wall currents for the  $TE_{n0p}$  mode.)

Because the tangential components of the electric field must vanish at the end-walls, these walls must coincide with zero crossings of the standing wave, or put differently, an integral multiple of half-wavelengths must fit along the  $z$ -direction, that is,  $l = p\lambda_g/2 = p\pi/\beta$ , or  $\beta = p\pi/l$ , where  $p$  is a non-zero integer. For the same reason, the standing-wave patterns along the transverse directions require  $a = n\lambda_x/2$  and  $b = m\lambda_y/2$ , or

## 9.10. Resonant Cavities

$k_x = n\pi/a$  and  $k_y = m\pi/b$ . Thus, all three cartesian components of the wave vector are quantized, and therefore, so is the frequency of the wave  $\omega = c\sqrt{k_x^2 + k_y^2 + \beta^2}$ :

$$\omega_{nmp} = c\sqrt{\left(\frac{n\pi}{a}\right)^2 + \left(\frac{m\pi}{b}\right)^2 + \left(\frac{p\pi}{l}\right)^2} \quad (\text{resonant frequencies}) \quad (9.10.1)$$

Such modes are designated as  $TE_{nmp}$  or  $TM_{nmp}$ . For simplicity, we consider the case  $TE_{n0p}$ . Eqs. (9.3.6) also describe backward-moving waves if one replaces  $\beta$  by  $-\beta$ , which also changes the sign of  $\eta_{TE} = \eta\omega/\beta c$ . Starting with a linear combination of forward and backward waves in the  $TE_{n0}$  mode, we obtain the field components:

$$\begin{aligned} H_z(x, z) &= H_0 \cos k_c x (Ae^{-j\beta z} + Be^{j\beta z}), \\ H_x(x, z) &= jH_1 \sin k_c x (Ae^{-j\beta z} - Be^{j\beta z}), \quad H_1 = \frac{\beta}{k_c} H_0 \\ E_y(x, z) &= -jE_0 \sin k_c x (Ae^{-j\beta z} + Be^{j\beta z}), \quad E_0 = \frac{\omega}{\omega_c} \eta H_0 \end{aligned} \quad (9.10.2)$$

where  $\omega_c = ck_c$ . By requiring that  $E_y(x, z)$  have  $z$ -dependence of the form  $\sin \beta z$ , the coefficients  $A, B$  must be chosen as  $A = -B = j/2$ . Then, Eq. (9.10.2) specializes into:

$$\begin{aligned} H_z(x, z) &= H_0 \cos k_c x \sin \beta z, \\ H_x(x, z) &= -H_1 \sin k_c x \cos \beta z, \quad H_1 = \frac{\beta}{k_c} H_0 \\ E_y(x, z) &= -jE_0 \sin k_c x \sin \beta z, \quad E_0 = \frac{\omega}{\omega_c} \eta H_0 \end{aligned} \quad (9.10.3)$$

As expected, the vanishing of  $E_y(x, z)$  on the front/back walls,  $z = 0$  and  $z = l$ , and on the left/right walls,  $x = 0$  and  $x = a$ , requires the quantization conditions:  $\beta = p\pi/l$  and  $k_c = n\pi/a$ . The  $Q$  of the resonator can be calculated from its definition:

$$Q = \omega \frac{W}{P_{\text{loss}}} \quad (9.10.4)$$

where  $W$  is the total time-averaged energy stored within the cavity volume and  $P_{\text{loss}}$  is the total power loss due to the wall ohmic losses (plus other losses, such as dielectric losses, if present.) The ratio  $\Delta\omega = W_{\text{loss}}/W$  is usually identified as the 3-dB width of the resonance centered at frequency  $\omega$ . Therefore, we may write  $Q = \omega/\Delta\omega$ .

It is easily verified that the electric and magnetic energies are equal, therefore,  $W$  may be calculated by integrating the electric energy density over the cavity volume:

$$\begin{aligned} W &= 2W_e = 2 \frac{1}{4} \int_{\text{vol}} \epsilon |E_y(x, z)|^2 dx dy dz = \frac{1}{2} \epsilon |E_0|^2 \int_0^a \int_0^b \int_0^l \sin^2 k_c x \cos^2 \beta z dx dy dz \\ &= \frac{1}{8} \epsilon |E_0|^2 (abl) = \frac{1}{8} \mu |H_0|^2 \frac{\omega^2}{\omega_c^2} (abl) = \frac{1}{8} \mu |H_0|^2 \left[ \frac{k_c^2 + \beta^2}{k_c^2} \right] (abl) \end{aligned}$$

where we used the following definite integrals (valid because  $k_c = n\pi/a$ ,  $\beta = p\pi/l$ ):

$$\int_0^a \sin^2 k_c x dx = \int_0^a \cos^2 k_c x dx = \frac{a}{2}, \quad \int_0^l \sin^2 \beta z dz = \int_0^l \cos^2 \beta z dz = \frac{l}{2} \quad (9.10.5)$$

The ohmic losses are calculated from Eq. (9.2.6), integrated over all six cavity sides. The surface currents induced on the walls are related to the tangential magnetic fields by  $\mathbf{J}_s = \hat{\mathbf{n}} \times \mathbf{H}_{\text{tan}}$ . The directions of these currents are shown in Fig. 9.10.1. Specifically, we find for the currents on the six sides:

$$|\mathbf{J}_s|^2 = \begin{cases} H_0^2 \sin^2 \beta z & \text{(left \& right)} \\ H_0^2 \cos^2 k_c x \sin^2 \beta z + H_1^2 \sin^2 k_c x \cos^2 \beta z & \text{(top \& bottom)} \\ H_1^2 \sin^2 k_c x & \text{(front \& back)} \end{cases}$$

The power loss can be computed by integrating the loss per unit conductor area, Eq. (9.2.6), over the six wall sides, or doubling the answer for the left, top, and front sides. Using the integrals (9.10.5), we find:

$$\begin{aligned} P_{\text{loss}} &= \frac{1}{2} R_s \int_{\text{walls}} |\mathbf{J}_s|^2 dA = R_s \left[ H_0^2 \frac{bl}{2} + (H_0^2 + H_1^2) \frac{al}{4} + H_1^2 \frac{ab}{2} \right] \\ &= \frac{1}{4} R_s H_0^2 \left[ l(2b + a) + \frac{\beta^2}{k_c^2} a(2b + l) \right] \end{aligned} \quad (9.10.6)$$

where we substituted  $H_1^2 = H_0^2 \beta^2 / k_c^2$ . It follows that the  $Q$ -factor will be:

$$Q = \omega \frac{W}{P_{\text{loss}}} = \frac{\omega \mu}{2 R_s} \frac{(k_c^2 + \beta^2) (abl)}{k_c^2 l (2b + a) + \beta^2 a (2b + l)}$$

For the  $\text{TE}_{n0p}$  mode we have  $\beta = p\pi/l$  and  $k_c = n\pi/a$ . Using Eq. (9.2.7) to replace  $R_s$  in terms of the skin depth  $\delta$ , we find:

$$Q = \frac{1}{\delta} \frac{\frac{n^2}{a^2} + \frac{p^2}{l^2}}{\frac{n^2}{a^2} \left( \frac{2}{a} + \frac{1}{b} \right) + \frac{p^2}{l^2} \left( \frac{2}{l} + \frac{1}{b} \right)} \quad (9.10.7)$$

The lowest resonant frequency corresponds to  $n = p = 1$ . For a cubic cavity,  $a = b = l$ , the  $Q$  and the lowest resonant frequency are:

$$Q = \frac{a}{3\delta}, \quad \omega_{101} = \frac{c\pi\sqrt{2}}{a}, \quad f_{101} = \frac{\omega}{2\pi} = \frac{c}{a\sqrt{2}} \quad (9.10.8)$$

For an air-filled cubic cavity with  $a = 3$  cm, we find  $f_{101} = 7.07$  GHz,  $\delta = 7.86 \times 10^{-5}$  cm, and  $Q = 12724$ . As in waveguides, cavities can be excited by inserting small probes that generate fields resembling a particular mode.

## 9.11 Dielectric Slab Waveguides

A dielectric slab waveguide is a planar dielectric sheet or thin film of some thickness, say  $2a$ , as shown in Fig. 9.11.1. Wave propagation in the  $z$ -direction is by total internal reflection from the left and right walls of the slab. Such waveguides provide simple models for the confining mechanism of waves propagating in optical fibers.

### 9.11.1. Dielectric Slab Waveguides

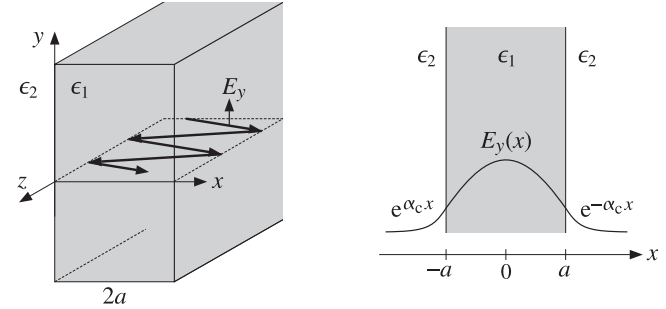


Fig. 9.11.1 Dielectric slab waveguide.

The propagating fields are confined primarily inside the slab, however, they also exist as evanescent waves outside it, decaying exponentially with distance from the slab. Fig. 9.11.1 shows a typical electric field pattern as a function of  $x$ .

For simplicity, we assume that the media to the left and right of the slab are the same. To guarantee total internal reflection, the dielectric constants inside and outside the slab must satisfy  $\epsilon_1 > \epsilon_2$ , and similarly for the refractive indices,  $n_1 > n_2$ .

We look for TE solutions that depend only on the  $x$  coordinate. The cutoff wavenumber  $k_c$  appearing in the Helmholtz equation for  $H_z(x)$  depends on the dielectric constant of the propagation medium,  $k_c^2 = \omega^2 \epsilon \mu - \beta^2$ . Therefore,  $k_c^2$  takes different values inside and outside the guide:

$$\begin{aligned} k_{c1}^2 &= \omega^2 \epsilon_1 \mu_0 - \beta^2 = \omega^2 \epsilon_0 \mu_0 n_1^2 - \beta^2 = k_0^2 n_1^2 - \beta^2 & \text{(inside)} \\ k_{c2}^2 &= \omega^2 \epsilon_2 \mu_0 - \beta^2 = \omega^2 \epsilon_0 \mu_0 n_2^2 - \beta^2 = k_0^2 n_2^2 - \beta^2 & \text{(outside)} \end{aligned} \quad (9.11.1)$$

where  $k_0 = \omega/c_0$  is the free-space wavenumber. We note that  $\omega, \beta$  are the same inside and outside the guide. This follows from matching the tangential fields at all times  $t$  and all points  $z$  along the slab walls. The corresponding Helmholtz equations in the regions inside and outside the guide are:

$$\begin{aligned} \partial_x^2 H_z(x) + k_{c1}^2 H_z(x) &= 0 & \text{for } |x| \leq a \\ \partial_x^2 H_z(x) + k_{c2}^2 H_z(x) &= 0 & \text{for } |x| \geq a \end{aligned} \quad (9.11.2)$$

Inside the slab, the solutions are  $\sin k_{c1}x$  and  $\cos k_{c1}x$ , and outside,  $\sin k_{c2}x$  and  $\cos k_{c2}x$ , or equivalently,  $e^{\pm jk_{c2}x}$ . In order for the waves to remain confined in the near vicinity of the slab, the quantity  $k_{c2}$  must be *imaginary*, for if it is real, the fields would propagate at large  $x$  distances from the slab (they would correspond to the rays refracted from the inside into the outside.)

If we set  $k_{c2} = -j\alpha_c$ , the solutions outside will be  $e^{\pm \alpha_c x}$ . If  $\alpha_c$  is positive, then only the solution  $e^{-\alpha_c x}$  is physically acceptable to the right of the slab,  $x \geq a$ , and only  $e^{\alpha_c x}$  to the left,  $x \leq -a$ . Thus, the fields attenuate exponentially with the transverse distance  $x$ , and exist effectively within a skin depth distance  $1/\alpha_c$  from the slab. Setting  $k_{c1} = k_c$  and  $k_{c2} = -j\alpha_c$ , Eqs. (9.11.1) become in this new notation:

$$\boxed{\begin{matrix} k_c^2 = k_0^2 n_1^2 - \beta^2 \\ -\alpha_c^2 = k_0^2 n_2^2 - \beta^2 \end{matrix}} \Rightarrow \boxed{\begin{matrix} k_c^2 = k_0^2 n_1^2 - \beta^2 \\ \alpha_c^2 = \beta^2 - k_0^2 n_2^2 \end{matrix}} \quad (9.11.3)$$

Similarly, Eqs. (9.11.2) read:

$$\begin{aligned} \partial_x^2 H_z(x) + k_c^2 H_z(x) &= 0 \quad \text{for } |x| \leq a \\ \partial_x^2 H_z(x) - \alpha_c^2 H_z(x) &= 0 \quad \text{for } |x| \geq a \end{aligned} \quad (9.11.4)$$

The two solutions  $\sin k_c x$  and  $\cos k_c x$  inside the guide give rise to the so-called even and odd TE modes (referring to the even-ness or oddness of the resulting electric field.) For the *even modes*, the solutions of Eqs. (9.11.4) have the form:

$$H_z(x) = \begin{cases} H_1 \sin k_c x, & \text{if } -a \leq x \leq a \\ H_2 e^{-\alpha_c x}, & \text{if } x \geq a \\ H_3 e^{\alpha_c x}, & \text{if } x \leq -a \end{cases} \quad (9.11.5)$$

The corresponding  $x$ -components  $H_x$  are obtained by applying Eq. (9.3.8) using the appropriate value for  $k_c^2$ , that is,  $k_{c2}^2 = -\alpha_c^2$  outside and  $k_{c1}^2 = k_c^2$  inside:

$$H_x(x) = \begin{cases} -\frac{j\beta}{k_c^2} \partial_x H_z(x) = -\frac{j\beta}{k_c} H_1 \cos k_c x, & \text{if } -a \leq x \leq a \\ -\frac{j\beta}{-\alpha_c^2} \partial_x H_z(x) = -\frac{j\beta}{\alpha_c} H_2 e^{-\alpha_c x}, & \text{if } x \geq a \\ -\frac{j\beta}{-\alpha_c^2} \partial_x H_z(x) = \frac{j\beta}{\alpha_c} H_3 e^{\alpha_c x}, & \text{if } x \leq -a \end{cases} \quad (9.11.6)$$

The electric fields are  $E_y(x) = -\eta_{TE} H_x(x)$ , where  $\eta_{TE} = \omega \mu_0 / \beta$  is the *same* inside and outside the slab. Thus, the electric field has the form:

$$E_y(x) = \begin{cases} E_1 \cos k_c x, & \text{if } -a \leq x \leq a \\ E_2 e^{-\alpha_c x}, & \text{if } x \geq a \\ E_3 e^{\alpha_c x}, & \text{if } x \leq -a \end{cases} \quad (\text{even TE modes}) \quad (9.11.7)$$

where we defined the constants:

$$E_1 = \frac{j\beta}{k_c} \eta_{TE} H_1, \quad E_2 = \frac{j\beta}{\alpha_c} \eta_{TE} H_2, \quad E_3 = -\frac{j\beta}{\alpha_c} \eta_{TE} H_3 \quad (9.11.8)$$

The boundary conditions state that the tangential components of the magnetic and electric fields, that is,  $H_z, E_y$ , are continuous across the dielectric interfaces at  $x = -a$  and  $x = a$ . Similarly, the normal components of the magnetic field  $B_x = \mu_0 H_x$  and therefore also  $H_x$  must be continuous. Because  $E_y = -\eta_{TE} H_x$  and  $\eta_{TE}$  is the same in both media, the continuity of  $E_y$  follows from the continuity of  $H_x$ . The continuity of  $H_z$  at  $x = a$  and  $x = -a$  implies that:

$$H_1 \sin k_c a = H_2 e^{-\alpha_c a} \quad \text{and} \quad -H_1 \sin k_c a = H_3 e^{-\alpha_c a} \quad (9.11.9)$$

Similarly, the continuity of  $H_x$  implies (after canceling a factor of  $-j\beta$ ):

$$\frac{1}{k_c} H_1 \cos k_c a = \frac{1}{\alpha_c} H_2 e^{-\alpha_c a} \quad \text{and} \quad \frac{1}{k_c} H_1 \cos k_c a = -\frac{1}{\alpha_c} H_3 e^{-\alpha_c a} \quad (9.11.10)$$

Eqs. (9.11.9) and (9.11.10) imply:

$$H_2 = -H_3 = H_1 e^{\alpha_c a} \sin k_c a = H_1 e^{\alpha_c a} \frac{\alpha_c}{k_c} \cos k_c a \quad (9.11.11)$$

Similarly, we find for the electric field constants:

$$E_2 = E_3 = E_1 e^{\alpha_c a} \cos k_c a = E_1 e^{\alpha_c a} \frac{k_c}{\alpha_c} \sin k_c a \quad (9.11.12)$$

The consistency of the last equations in (9.11.11) or (9.11.12) requires that:

$$\cos k_c a = \frac{k_c}{\alpha_c} \sin k_c a \Rightarrow \boxed{\alpha_c = k_c \tan k_c a} \quad (9.11.13)$$

For the *odd TE modes*, we have for the solutions of Eq. (9.11.4):

$$H_z(x) = \begin{cases} H_1 \cos k_c x, & \text{if } -a \leq x \leq a \\ H_2 e^{-\alpha_c x}, & \text{if } x \geq a \\ H_3 e^{\alpha_c x}, & \text{if } x \leq -a \end{cases} \quad (9.11.14)$$

The resulting electric field is:

$$E_y(x) = \begin{cases} E_1 \sin k_c x, & \text{if } -a \leq x \leq a \\ E_2 e^{-\alpha_c x}, & \text{if } x \geq a \\ E_3 e^{\alpha_c x}, & \text{if } x \leq -a \end{cases} \quad (\text{odd TE modes}) \quad (9.11.15)$$

The boundary conditions imply in this case:

$$H_2 = H_3 = H_1 e^{\alpha_c a} \cos k_c a = -H_1 e^{\alpha_c a} \frac{\alpha_c}{k_c} \sin k_c a \quad (9.11.16)$$

and, for the electric field constants:

$$E_2 = -E_3 = E_1 e^{\alpha_c a} \sin k_c a = -E_1 e^{\alpha_c a} \frac{k_c}{\alpha_c} \cos k_c a \quad (9.11.17)$$

The consistency of the last equation requires:

$$\boxed{\alpha_c = -k_c \cot k_c a} \quad (9.11.18)$$

We note that the electric fields  $E_y(x)$  given by Eqs. (9.11.7) and (9.11.15) are even or odd functions of  $x$  for the two families of modes. Expressing  $E_2$  and  $E_3$  in terms of  $E_1$ , we summarize the forms of the electric fields in the two cases:



$$E_y(x) = \begin{cases} E_1 \cos k_c x, & \text{if } -a \leq x \leq a \\ E_1 \cos k_c a e^{-\alpha_c(x-a)}, & \text{if } x \geq a \\ E_1 \cos k_c a e^{\alpha_c(x+a)}, & \text{if } x \leq -a \end{cases} \quad (\text{even TE modes}) \quad (9.11.19)$$

$$E_y(x) = \begin{cases} E_1 \sin k_c x, & \text{if } -a \leq x \leq a \\ E_1 \sin k_c a e^{-\alpha_c(x-a)}, & \text{if } x \geq a \\ -E_1 \sin k_c a e^{\alpha_c(x+a)}, & \text{if } x \leq -a \end{cases} \quad (\text{odd TE modes}) \quad (9.11.20)$$

Given the operating frequency  $\omega$ , Eqs. (9.11.3) and (9.11.13) or (9.11.18) provide three equations in the three unknowns  $k_c$ ,  $\alpha_c$ ,  $\beta$ . To solve them, we add the two equations (9.11.3) to eliminate  $\beta$ :

$$\alpha_c^2 + k_c^2 = k_0^2(n_1^2 - n_2^2) = \frac{\omega^2}{c_0^2}(n_1^2 - n_2^2) \quad (9.11.21)$$

Next, we discuss the numerical solutions of these equations. Defining the dimensionless quantities  $u = k_c a$  and  $v = \alpha_c a$ , we may rewrite Eqs. (9.11.13), (9.11.18), and (9.11.21) in the equivalent forms:

$$\begin{cases} v = u \tan u \\ v^2 + u^2 = R^2 \end{cases} \quad (\text{even modes}), \quad \begin{cases} v = -u \cot u \\ v^2 + u^2 = R^2 \end{cases} \quad (\text{odd modes}) \quad (9.11.22)$$

where  $R$  is the normalized frequency variable:

$$R = k_0 a N_A = \frac{\omega a}{c_0} N_A = \frac{2\pi f a}{c_0} N_A = \frac{2\pi a}{\lambda} N_A \quad (9.11.23)$$

where  $N_A = \sqrt{n_1^2 - n_2^2}$  is the *numerical aperture* of the slab and  $\lambda = c_0/f$ , the free-space wavelength.

Because the functions  $\tan u$  and  $\cot u$  have many branches, there may be several possible solution pairs  $u, v$  for each value of  $R$ . These solutions are obtained at the intersections of the curves  $v = u \tan u$  and  $v = -u \cot u$  with the circle of radius  $R$ , that is,  $v^2 + u^2 = R^2$ . Fig. 9.11.2 shows the solutions for various values of the radius  $R$  corresponding to various values of  $\omega$ .

It is evident from the figure that for small enough  $R$ , that is,  $0 \leq R < \pi/2$ , there is only one solution and it is even (for an optical fiber, the single-mode condition reads  $2\pi a N_A / \lambda < 2.405$ , where  $a$  is the core radius.) For  $\pi/2 \leq R < \pi$ , there are two solutions, one even and one odd. For  $\pi \leq R < 3\pi/2$ , there are three solutions, two even and one odd, and so on. In general, there will be  $M + 1$  solutions, alternating between even and odd, if  $R$  falls in the interval:

$$\frac{M\pi}{2} \leq R < \frac{(M+1)\pi}{2} \quad (9.11.24)$$

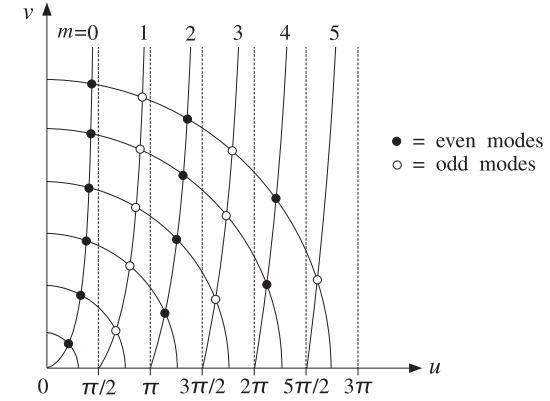


Fig. 9.11.2 Even and odd TE modes at different frequencies.

Given a value of  $R$ , we determine  $M$  as that integer satisfying Eq. (9.11.24), or,  $M \leq 2R/\pi < M + 1$ , that is, the largest integer less than  $2R/\pi$ :

$$M = \text{floor}\left(\frac{2R}{\pi}\right) \quad (\text{maximum mode number}) \quad (9.11.25)$$

Then, there will be  $M + 1$  solutions indexed by  $m = 0, 1, \dots, M$ , which will correspond to even modes if  $m$  is even and to odd modes if  $m$  is odd. The  $M + 1$  branches of  $\tan u$  and  $\cot u$  being intersected by the  $R$ -circle are those contained in the  $u$ -ranges:

$$R_m \leq u < R_{m+1}, \quad m = 0, 1, \dots, M \quad (9.11.26)$$

where

$$R_m = \frac{m\pi}{2}, \quad m = 0, 1, \dots, M \quad (9.11.27)$$

If  $m$  is even, the  $u$ -range (9.11.26) defines a branch of  $\tan u$ , and if  $m$  is odd, a branch of  $\cot u$ . We can combine the even and odd cases of Eq. (9.11.22) into a single case by noting the identity:

$$\tan(u - R_m) = \begin{cases} \tan u, & \text{if } m \text{ is even} \\ -\cot u, & \text{if } m \text{ is odd} \end{cases} \quad (9.11.28)$$

This follows from the trigonometric identity:

$$\tan(u - m\pi/2) = \frac{\sin u \cos(m\pi/2) - \cos u \sin(m\pi/2)}{\cos u \cos(m\pi/2) + \sin u \sin(m\pi/2)}$$

Therefore, to find the  $m$ th mode, whether even or odd, we must find the unique solution of the following system in the  $u$ -range  $R_m \leq u < R_{m+1}$ :



$$\begin{aligned} v &= u \tan(u - R_m) \\ v^2 + u^2 &= R^2 \end{aligned} \quad (\text{mth mode}) \quad (9.11.29)$$

If one had an approximate solution  $u, v$  for the  $m$ th mode, one could refine it by using Newton's method, which converges very fast provided it is close to the true solution. Just such an approximate solution, accurate to within one percent of the true solution, was given by Lotspeich [857]. Without going into the detailed justification of this method, the approximation is as follows:

$$u = R_m + w_1(m)u_1(m) + w_2(m)u_2(m), \quad m = 0, 1, \dots, M \quad (9.11.30)$$

where  $u_1(m), u_2(m)$  are approximate solutions near and far from the cutoff  $R_m$ , and  $w_1(m), w_2(m)$  are weighting factors:

$$\begin{aligned} u_1(m) &= \frac{\sqrt{1 + 2R(R - R_m)} - 1}{R}, \quad u_2(m) = \frac{\pi}{2} \frac{R - m}{R + 1} \\ w_1(m) &= \exp(-(R - R_m)^2 / V_m^2), \quad w_2(m) = 1 - w_1(m) \\ V_m &= \frac{1}{\sqrt{\ln 1.25}} \left( \frac{\pi/4 + R_m}{\cos(\pi/4)} - R_m \right) \end{aligned} \quad (9.11.31)$$

This solution serves as the starting point to Newton's iteration for solving the equation  $F(u) = 0$ , where  $F(u)$  is defined by

$$F(u) = u \tan(u - R_m) - v = u \tan(u - R_m) - \sqrt{R^2 - u^2} \quad (9.11.32)$$

Newton's iteration is:

$$\begin{aligned} &\text{for } i = 1, 2, \dots, N_{it} \text{ do:} \\ &\quad u = u - \frac{F(u)}{G(u)} \end{aligned} \quad (9.11.33)$$

where  $G(u)$  is the derivative  $F'(u)$ , correct to order  $O(F)$ :

$$G(u) = \frac{v}{u} + \frac{u}{v} + \frac{R^2}{u} \quad (9.11.34)$$

The solution steps defined in Eqs. (9.11.29)–(9.11.34) have been implemented in the MATLAB function `ds1ab.m`, with usage:

```
[u,v,err] = ds1ab(R,Nit); % TE-mode cutoff wavenumbers in a dielectric slab
```

where  $N_{it}$  is the desired number of Newton iterations (9.11.33), `err` is the value of  $F(u)$  at the end of the iterations, and  $u, v$  are the  $(M + 1)$ -dimensional vectors of solutions. The number of iterations is typically very small,  $N_{it} = 2$ –3.

The related MATLAB function `dguid.m` uses `ds1ab` to calculate the solution parameters  $\beta, k_c, \alpha_c$ , given the frequency  $f$ , the half-length  $a$ , and the refractive indices  $n_1, n_2$  of the slab. It has usage:

### 9.11. Dielectric Slab Waveguides

```
[be,kc,ac,fc,err] = dguide(f,a,n1,n2,Nit); % dielectric slab guide
```

where  $f$  is in GHz,  $a$  in cm, and  $\beta, k_c, \alpha_c$  in  $\text{cm}^{-1}$ . The quantity  $f_c$  is the vector of the  $M + 1$  cutoff frequencies defined by the branch edges  $R_m = m\pi/2$ , that is,  $R_m = \omega_m a N_A / c_0 = 2\pi f_m a N_A / c_0 = m\pi/2$ , or,

$$f_m = \frac{mc_0}{4aN_A}, \quad m = 0, 1, \dots, M \quad (9.11.35)$$

The meaning of  $f_m$  is that there are  $m + 1$  propagating modes for each  $f$  is in the interval  $f_m \leq f < f_{m+1}$ .

**Example 9.11.1: Dielectric Slab Waveguide.** Determine the propagating TE modes of a dielectric slab of half-length  $a = 0.5$  cm at frequency  $f = 30$  GHz. The refractive indices of the slab and the surrounding dielectric are  $n_1 = 2$  and  $n_2 = 1$ .

**Solution:** The solution is obtained by the MATLAB call:

```
f = 30; a = 0.5; n1 = 2; n2 = 1; Nit = 3;
[be,kc,ac,fc,err] = dguide(f,a,n1,n2,Nit)
```

The frequency radius is  $R = 5.4414$ , which gives  $2R/\pi = 3.4641$ , and therefore,  $M = 3$ . The resulting solutions, depicted in Fig. 9.11.3, are as follows:

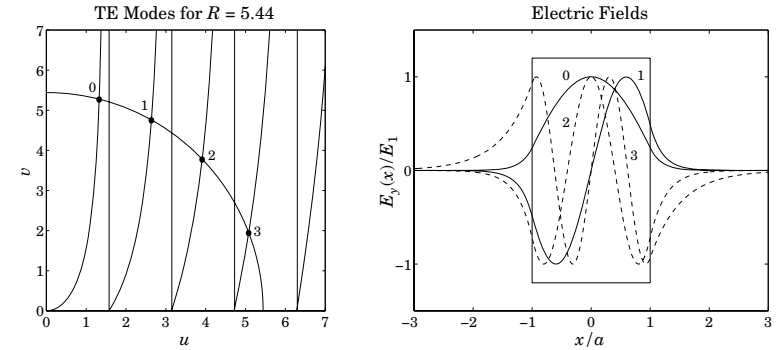


Fig. 9.11.3 TE modes and corresponding  $E$ -field patterns.

$m$	$u$	$v$	$\beta$	$k_c$	$\alpha_c$	$f_m$
0	1.3248	5.2777	12.2838	2.6497	10.5553	0.0000
1	2.6359	4.7603	11.4071	5.2718	9.5207	8.6603
2	3.9105	3.7837	9.8359	7.8210	7.5675	17.3205
3	5.0793	1.9519	7.3971	10.1585	3.9037	25.9808

The cutoff frequencies  $f_m$  are in GHz. We note that as the mode number  $m$  increases, the quantity  $\alpha_c$  decreases and the effective skin depth  $1/\alpha_c$  increases, causing the fields

outside the slab to be less confined. The electric field patterns are also shown in the figure as functions of  $x$ .

The approximation error,  $\text{err}$ , is found to be  $4.885 \times 10^{-15}$  using only three Newton iterations. Using two, one, and no (the Lotspeich approximation) iterations would result in the errors  $2.381 \times 10^{-8}$ ,  $4.029 \times 10^{-4}$ , and 0.058.

The lowest non-zero cutoff frequency is  $f_1 = 8.6603$  GHz, implying that there will be a single solution if  $f$  is in the interval  $0 \leq f < f_1$ . For example, if  $f = 5$  GHz, the solution is  $\beta = 1.5649$  rad/cm,  $k_c = 1.3920$  rad/cm, and  $\alpha_c = 1.1629$  nepers/cm.

The frequency range over which there are only four solutions is  $[25.9808, 34.6410]$  GHz, where the upper limit is  $4f_1$ .  $\square$

In terms of the ray picture of the propagating wave, the angles of total internal reflection are quantized according to the values of the propagation wavenumber  $\beta$  for the various modes.

If we denote by  $k_1 = k_0 n_1$  the wavenumber within the slab, then the wavenumbers  $\beta, k_c$  are the  $z$ - and  $x$ -components  $k_z, k_x$  of  $k_1$  with an angle of incidence  $\theta$ . (The vectorial relationships are the same as those in Fig. 9.9.1.) Thus, we have:

$$\begin{aligned}\beta &= k_1 \sin \theta = k_0 n_1 \sin \theta \\ k_c &= k_1 \cos \theta = k_0 n_1 \cos \theta\end{aligned}\quad (9.11.36)$$

The value of  $\beta$  for each mode will generate a corresponding value for  $\theta$ . The attenuation wavenumber  $\alpha_c$  outside the slab can also be expressed in terms of the total internal reflection angles:

$$\alpha_c = \sqrt{\beta^2 - k_0^2 n_2^2} = k_0 \sqrt{n_1^2 \sin^2 \theta - n_2^2}$$

Since the critical angle is  $\sin \theta_c = n_2/n_1$ , we may also express  $\alpha_c$  as:

$$\alpha_c = k_0 n_1 \sqrt{\sin^2 \theta - \sin^2 \theta_c} \quad (9.11.37)$$

**Example 9.11.2:** For the Example 9.11.1, we calculate  $k_0 = 6.2832$  and  $k_1 = 12.5664$  rad/cm. The critical and total internal reflection angles of the four modes are found to be:

$$\begin{aligned}\theta_c &= \text{asin} \left( \frac{n_2}{n_1} \right) = 30^\circ \\ \theta &= \text{asin} \left( \frac{\beta}{k_1} \right) = \{77.8275^\circ, 65.1960^\circ, 51.5100^\circ, 36.0609^\circ\}\end{aligned}$$

As required, all  $\theta$ s are greater than  $\theta_c$ .  $\square$

## 9.12 Problems

9.1 An air-filled  $1.5 \text{ cm} \times 3 \text{ cm}$  waveguide is operated at a frequency that lies in the middle of its  $\text{TE}_{10}$  mode band. Determine this operating frequency in GHz and calculate the maximum power in Watts that can be transmitted without causing dielectric breakdown of air. The dielectric strength of air is 3 MV/m.

## 9.12. Problems

9.2 It is desired to design an air-filled rectangular waveguide such that (a) it operates only in the  $\text{TE}_{10}$  mode with the widest possible bandwidth, (b) it can transmit the maximum possible power, and (c) the operating frequency is 12 GHz and it lies in the middle of the operating band. What are the dimensions of the guide in cm?

9.3 An air-filled rectangular waveguide is used to transfer power to a radar antenna. The guide must meet the following specifications: The two lowest modes are  $\text{TE}_{10}$  and  $\text{TE}_{20}$ . The operating frequency is 3 GHz and must lie exactly halfway between the cutoff frequencies of these two modes. The maximum electric field within the guide may not exceed, by a safety margin of 3, the breakdown field of air 3 MV/m.

- Determine the smallest dimensions  $a, b$  for such a waveguide, if the transmitted power is required to be 1 MW.
- What are the dimensions  $a, b$  if the transmitted power is required to be maximum? What is that maximum power in MW?

9.4 It is desired to design an air-filled rectangular waveguide operating at 5 GHz, whose group velocity is  $0.8c$ . What are the dimensions  $a, b$  of the guide (in cm) if it is also required to carry maximum power and have the widest possible bandwidth? What is the cutoff frequency of the guide in GHz and the operating bandwidth?

9.5 Show the following relationship between guide wavelength and group velocity in an arbitrary air-filled waveguide:  $v_g \lambda_g = c\lambda$ , where  $\lambda_g = 2\pi/\beta$  and  $\lambda$  is the free-space wavelength. Moreover, show that the  $\lambda$  and  $\lambda_g$  are related to the cutoff wavelength  $\lambda_c$  by:

$$\frac{1}{\lambda^2} = \frac{1}{\lambda_g^2} + \frac{1}{\lambda_c^2}$$

9.6 Determine the four lowest modes that can propagate in a WR-159 and a WR-90 waveguide. Calculate the cutoff frequencies (in GHz) and cutoff wavelengths (in cm) of these modes.

9.7 An air-filled WR-90 waveguide is operated at 9 GHz. Calculate the maximum power that can be transmitted without causing dielectric breakdown of air. Calculate the attenuation constant in dB/m due to wall ohmic losses. Assume copper walls.

9.8 A rectangular waveguide has sides  $a, b$  such that  $b \leq a/2$ . Determine the cutoff wavelength  $\lambda_c$  of this guide. Show that the operating wavelength band of the lowest mode is  $0.5\lambda_c \leq \lambda \leq \lambda_c$ . Moreover, show that the allowed range of the guide wavelength is  $\lambda_g \geq \lambda_c/\sqrt{3}$ .

9.9 The  $\text{TE}_{10}$  mode operating bandwidth of an air-filled waveguide is required to be 4-7 GHz. What are the dimensions of the guide?

9.10 *Computer Experiment: WR-159 Waveguide.* Reproduce the two graphs of Fig. 9.8.2.

9.11 *Computer Experiment: Dielectric Slab Waveguide.* Using the MATLAB functions `ds1ab` and `dguide`, write a program that reproduces all the results and graphs of Examples 9.11.1 and 9.11.2.

9.12 A TM mode is propagated along a waveguide of arbitrary but uniform cross section. Assume perfectly conducting walls.

- Show that the  $E_z(x, y)$  component satisfies:

$$\int_S |\nabla E_z|^2 dS = k_c^2 \int_S |E_z|^2 dS$$

- Using the above result, show that the energy velocity is equal to the group velocity.